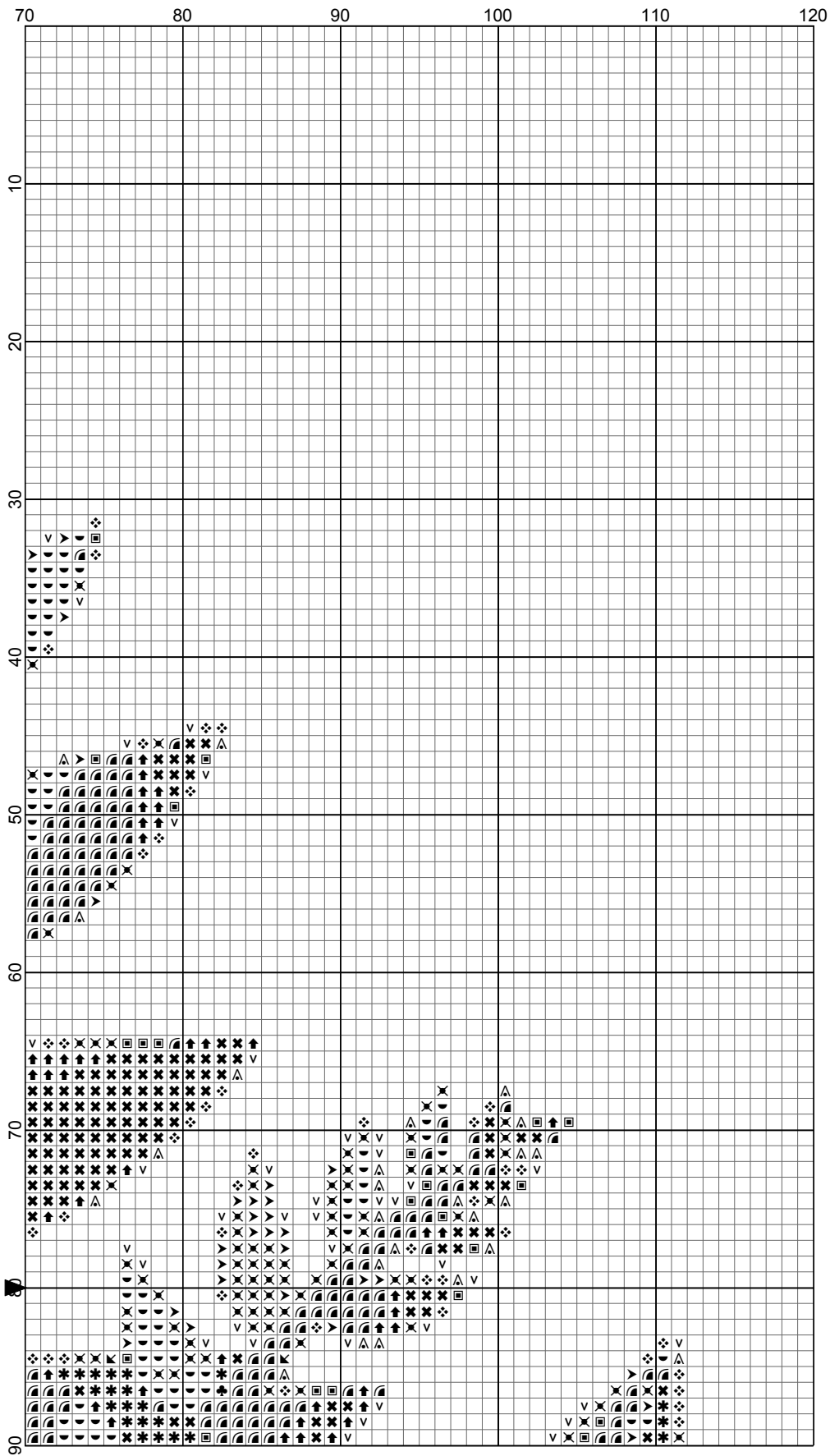
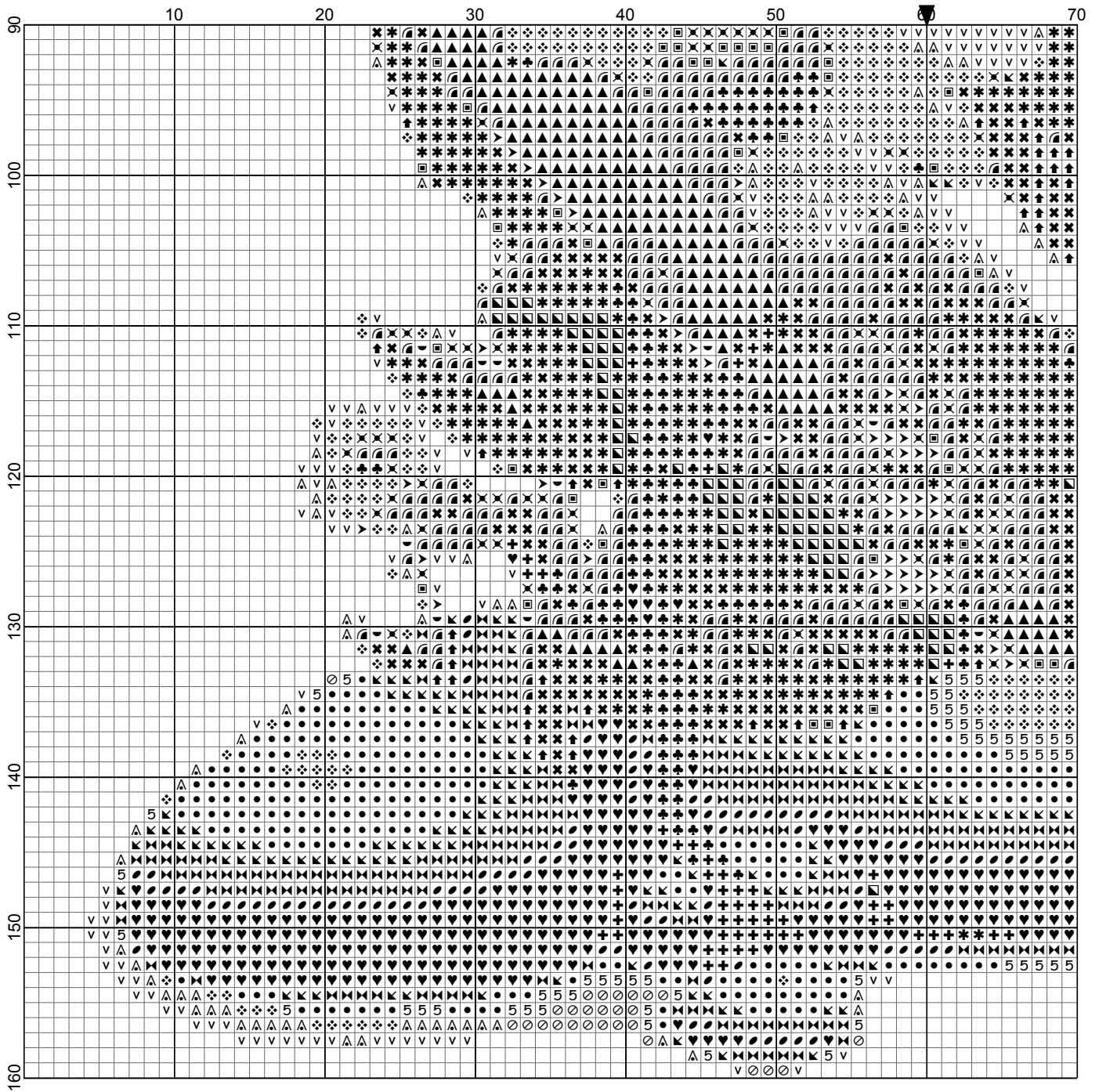


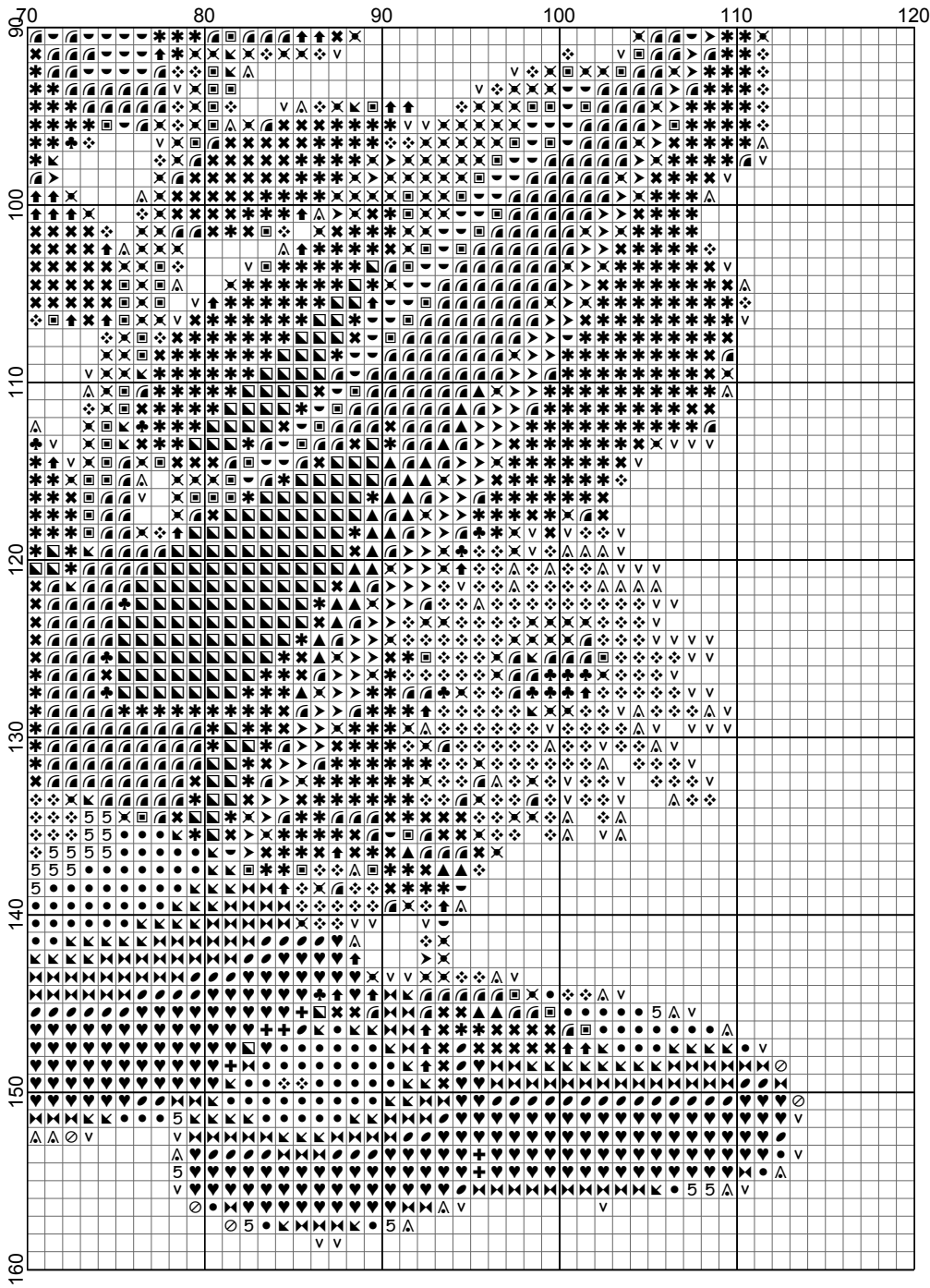
Ornamental Plant



- Legend:
- DMC-169
 - DMC-317
 - DMC-318
 - DMC-469
 - DMC-471
 - DMC-522
 - DMC-646
 - DMC-647
 - DMC-905
 - DMC-934
 - DMC-937
 - DMC-3072
 - DMC-3347
 - DMC-3362
 - DMC-3363
 - DMC-3364
 - DMC-3743
 - DMC-3753
 - DMC-3781
 - DMC-3782
 - DMC-3787
 - DMC-3840



Ornamental Plant



Ornamental Plant

Author: DiamondPaintingPatterns.net
Grid Size: 120W x 160H
Design Area: 11,00" x 16,00" (110 x 160 stitches)

Legend:

	DMC 169 pewter - lt (336 stitches)		DMC 3072 beaver gray - vy lt (379 stitches)
	DMC 317 pewter gray (549 stitches)		DMC 3347 yellow green - md (254 stitches)
	DMC 318 steel gray - lt (386 stitches)		DMC 3362 pine green - dk (917 stitches)
	DMC 469 avocado green (1103 stitches)		DMC 3363 pine green - md (185 stitches)
	DMC 471 avocado green - vy lt (210 stitches)		DMC 3364 pine green (553 stitches)
	DMC 522 fern green (228 stitches)		DMC 3743 antique violet - vy lt (262 stitches)
	DMC 646 beaver gray - dk (149 stitches)		DMC 3753 antique blue - ul vy (32 stitches)
	DMC 647 beaver gray - md (265 stitches)		DMC 3781 mocha brown - dk (62 stitches)
	DMC 905 parrot green - dk (237 stitches)		DMC 3782 mocha brown - lt (723 stitches)
	DMC 934 black avocado green (441 stitches)		DMC 3787 brown gray - dk (177 stitches)
	DMC 937 avocado green - md (812 stitches)		DMC 3840 lavender blue - lt (75 stitches)

Pattern Shape: 2.5 mm (1/10 inch) square

Free for download and print.

This pattern is for personal and noncommercial use only.
Don't redistribute or sell this pattern on other market or pattern platforms.

Visit <https://DiamondPaintingPatterns.net> for more free printable diamond painting patterns.

How to print this PDF at 100 percent (actual size)

When you need to print a document precisely at its actual size, but the output that emerges from your home printer appears too large or too small, check your PDF application for settings that force its output at more or less than actual size.

This is what you need to do for printing without resizing:

- Open your PDF document
- Select 'Print...' in the File menu
- Within the 'Print' settings window, set the scale to 100%
- and press 'Print' to print at 100% of the original PDF.