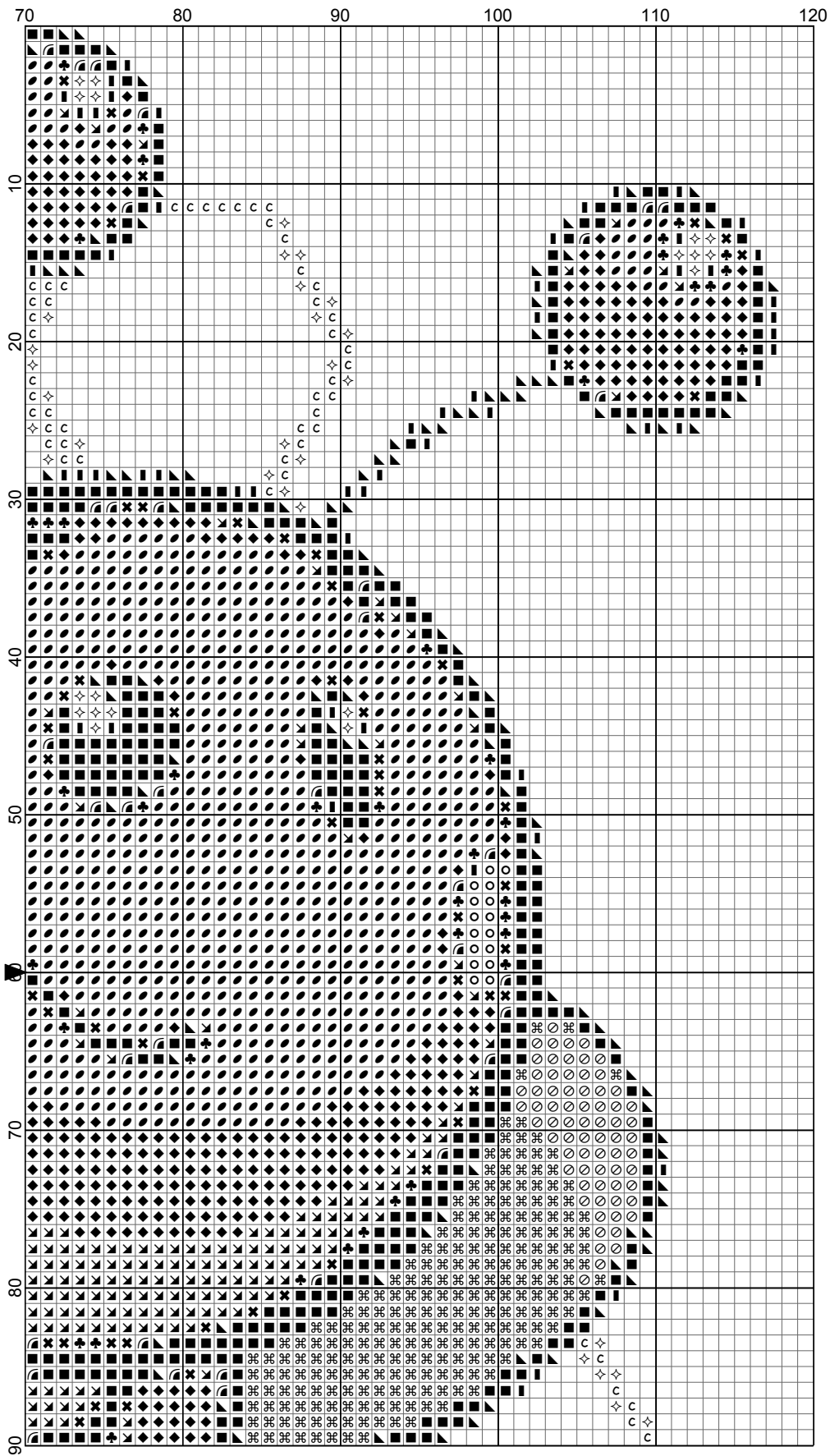
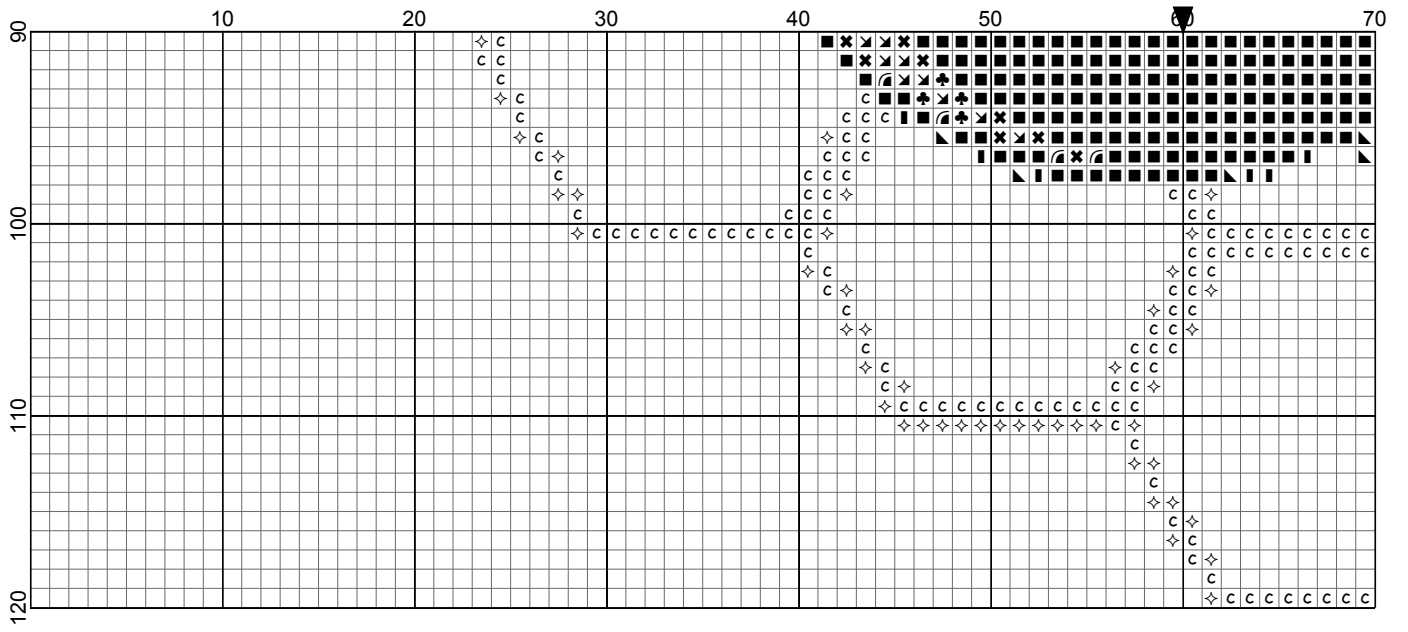


Happy Bee

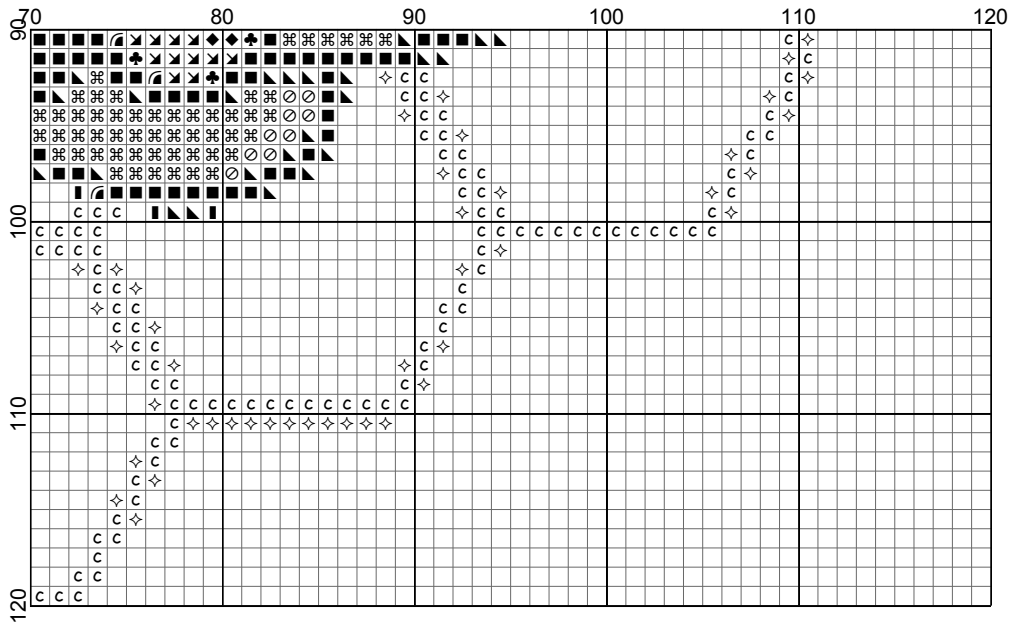


- Legend:
- DMC-310
 - ◆ DMC-444
 - ▲ DMC-535
 - ⊞ DMC-598
 - ▬ DMC-646
 - ◇ DMC-745
 - DMC-827
 - ◐ DMC-973
 - ▼ DMC-3820
 - ✕ DMC-3829
 - ⊕ DMC-3852
 - DMC-3854
 - ⊞ DMC-3855
 - ◐ DMC-3862

Happy Bee

















Happy Bee



Happy Bee

Author: DiamondPaintingPatterns.net
Grid Size: 120W x 120H
Design Area: 11,60" x 12,00" (116 x 120 stitches)

Legend:

	DMC 310 black (1048 stitches)		DMC 973 canary - br (985 stitches)
	DMC 444 lemon - dk (701 stitches)		DMC 3820 straw - dk (661 stitches)
	DMC 535 ash gray - vy lt (250 stitches)		DMC 3829 old gold - vy dk (99 stitches)
	DMC 598 turquoise - lt (1244 stitches)		DMC 3852 straw - vy dk (116 stitches)
	DMC 646 beaver gray - dk (121 stitches)		DMC 3854 autumn gold - md (66 stitches)
	DMC 745 yellow - lt pl (218 stitches)		DMC 3855 autumn gold - lt (519 stitches)
	DMC 827 blue - vy lt (502 stitches)		DMC 3862 mocha beige - dk (78 stitches)

Pattern shape: 2.5 mm (1/10 inch) square

Free for download and print.

This pattern is for personal and noncommercial use only.
Don't redistribute or sell this pattern on other market or pattern platforms.

Visit <https://DiamondPaintingPatterns.net> for more free printable diamond painting patterns.

How to print this PDF at 100 percent (actual size)

When you need to print a document precisely at its actual size, but the output that emerges from your home printer appears too large or too small, check your PDF application for settings that force its output at more or less than actual size.

This is what you need to do for printing without resizing:

- Open your PDF document
- Select 'Print...' in the File menu
- Within the 'Print' settings window, set the scale to 100%
- and press 'Print' to print at 100% of the original PDF.