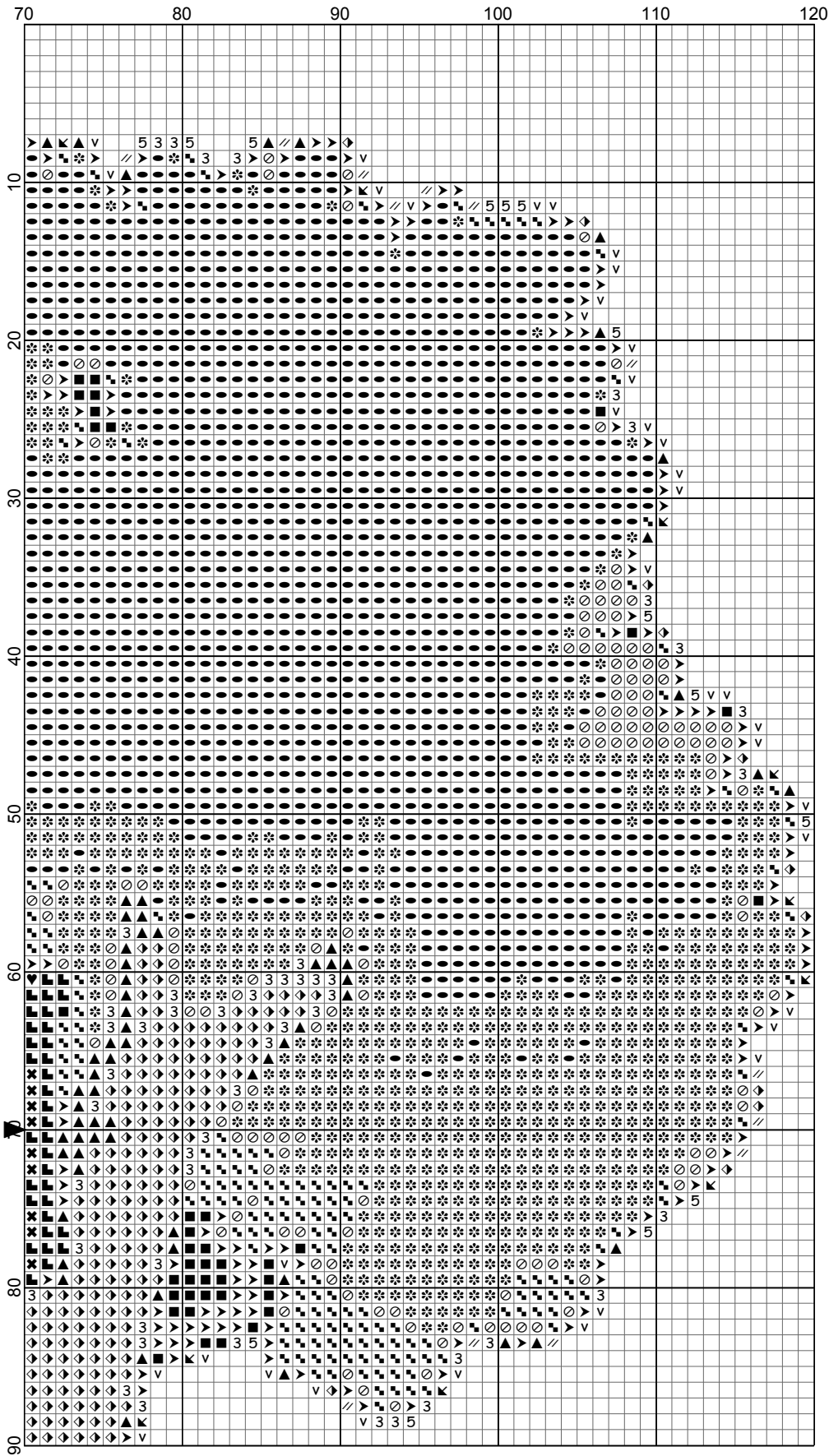
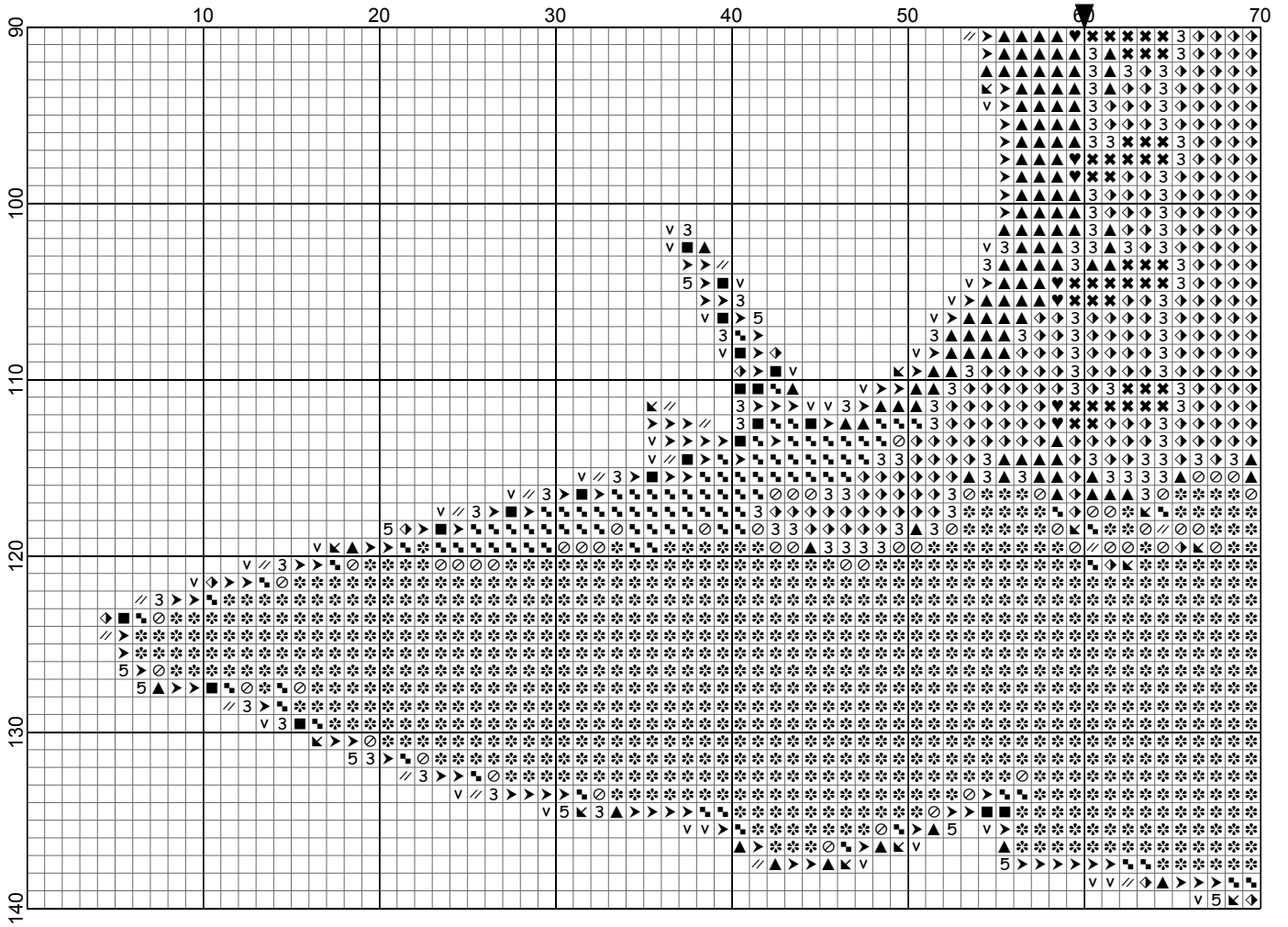


Tree House

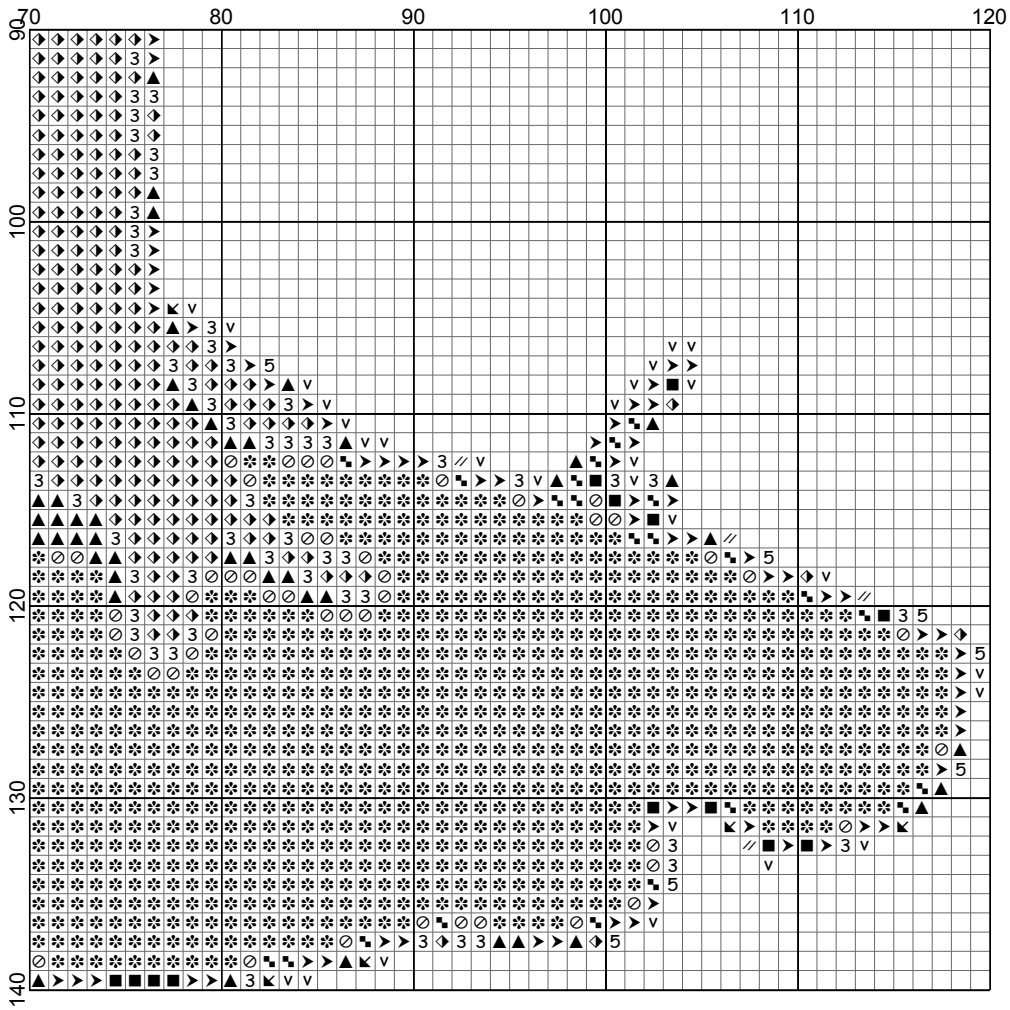


- Legend:
- DMC-310
  - DMC-434
  - DMC-452
  - DMC-640
  - DMC-645
  - DMC-646
  - DMC-648
  - DMC-801
  - DMC-890
  - DMC-898
  - DMC-909
  - DMC-910
  - DMC-911
  - DMC-912
  - DMC-3024

Tree House

















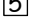
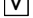
Tree House



# Tree House

**Author:** DiamondPaintingPatterns.net  
**Grid Size:** 120W x 140H  
**Design Area:** 12,00" x 14,00" (120 x 140 stitches)

## Legend:

	DMC 310 black (299 stitches)		DMC 801 coffee brown - dk (144 stitches)
	DMC 434 brown - lt (186 stitches)		DMC 890 pistachio green - ul dk (742 stitches)
	DMC 452 shell gray - md (55 stitches)		DMC 898 coffee brown - vy dk (274 stitches)
	DMC 640 beige gray - vy dk (747 stitches)		DMC 909 emerald green - vy dk (1260 stitches)
	DMC 645 beaver gray - vy dk (540 stitches)		DMC 910 emerald green - dk (1247 stitches)
	DMC 646 beaver gray - dk (244 stitches)		DMC 911 emerald green - md (3019 stitches)
	DMC 647 beaver gray - md (43 stitches)		DMC 912 emerald green - lt (2080 stitches)
	DMC 648 beaver gray - lt (41 stitches)		DMC 3024 brown gray - vy lt (150 stitches)

**Pattern shape:** 2.5 mm (1/10 inch) square

## Free for download and print.

This pattern is for personal and noncommercial use only.  
Don't redistribute or sell this pattern on other market or pattern platforms.

Visit <https://DiamondPaintingPatterns.net> for more free printable diamond painting patterns.

## How to print this PDF at 100 percent (actual size)

When you need to print a document precisely at its actual size, but the output that emerges from your home printer appears too large or too small, check your PDF application for settings that force its output at more or less than actual size.

This is what you need to do for printing without resizing:

- Open your PDF document
- Select 'Print...' in the File menu
- Within the 'Print' settings window, set the scale to 100%
- and press 'Print' to print at 100% of the original PDF.