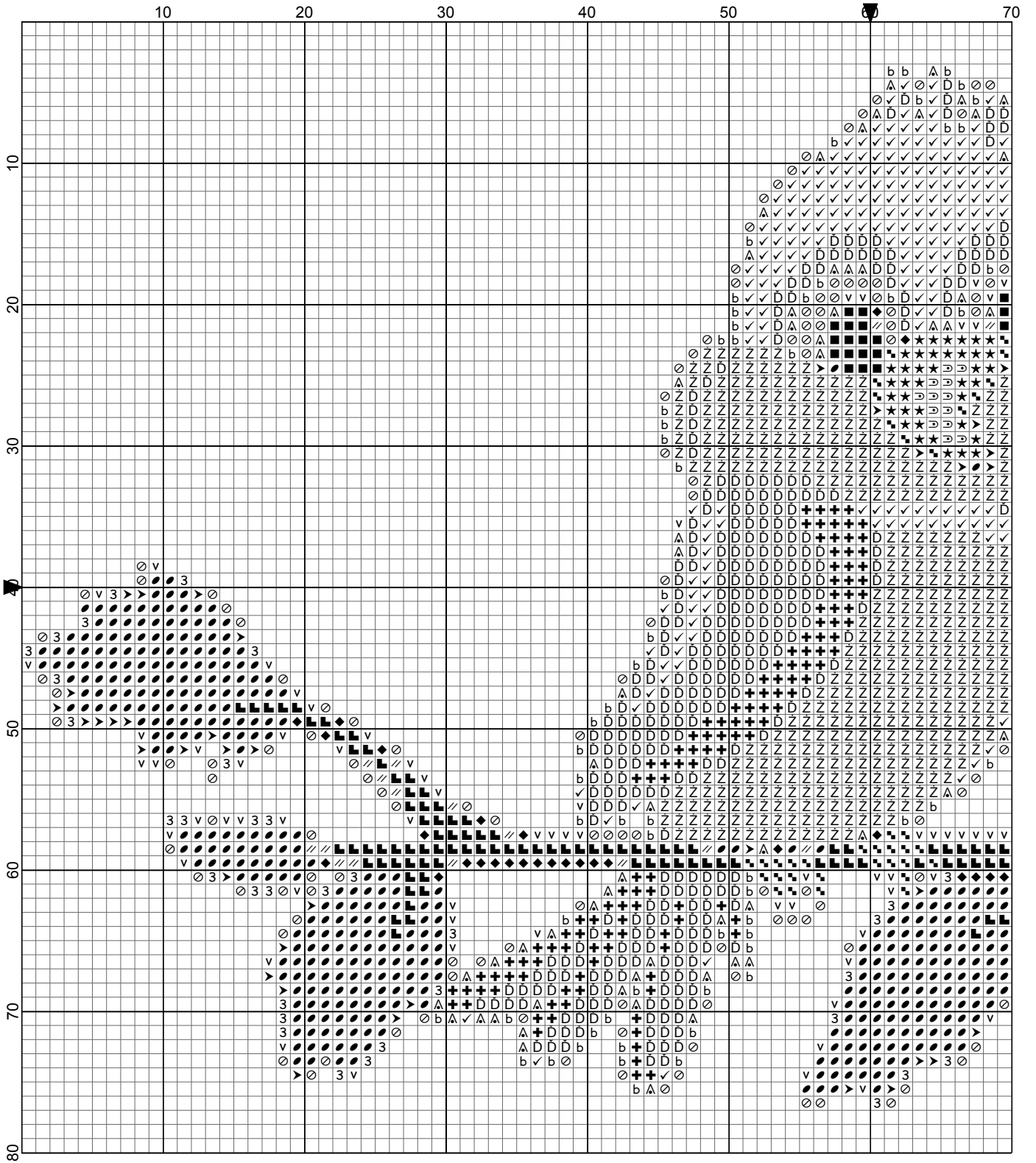
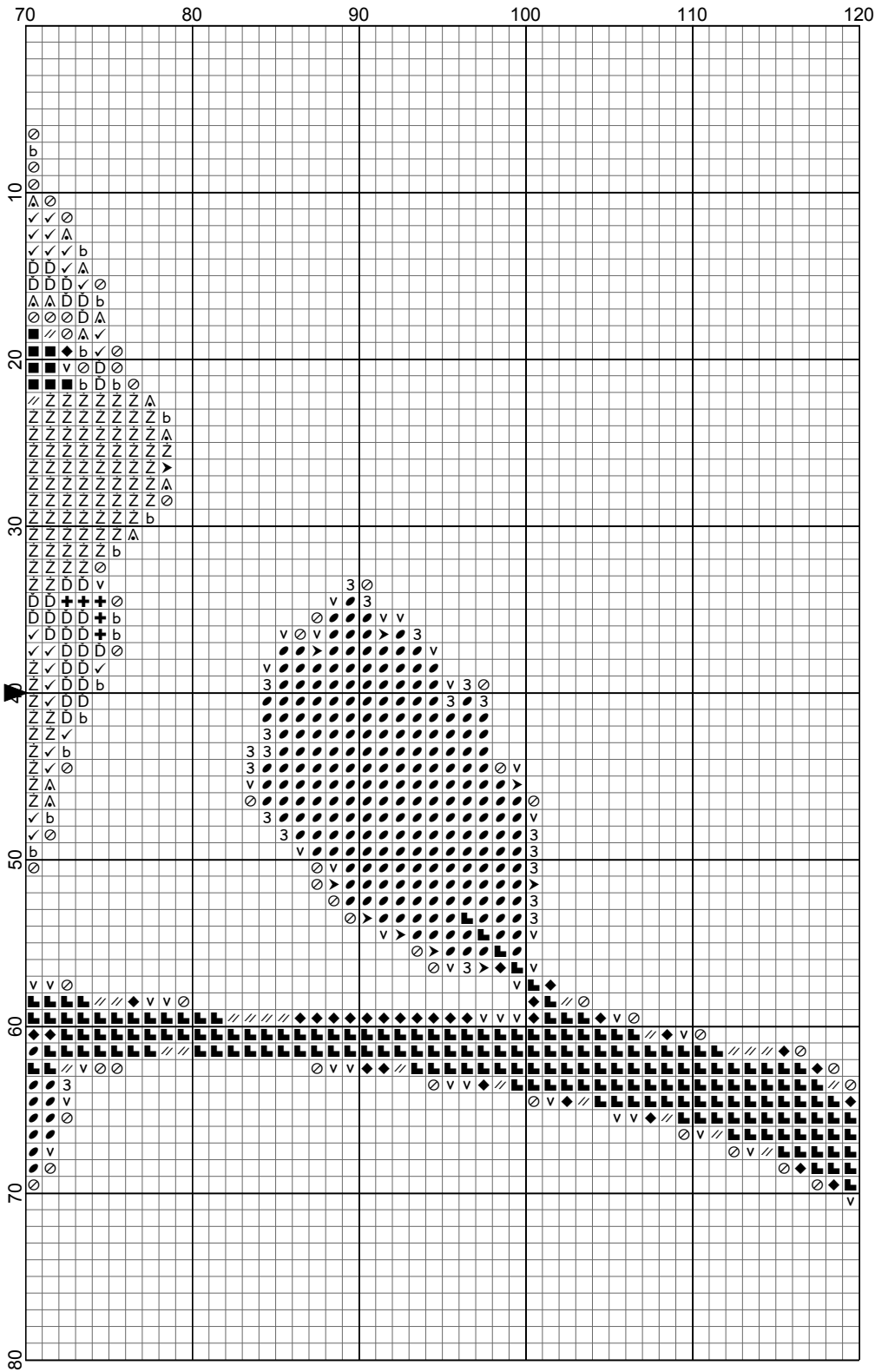


Bird on Branch



Bird on Branch








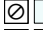



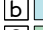

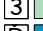


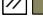



- Legend:
- DMC-310
 - ◼ DMC-703
 - ◻ DMC-833
 - ▷ DMC-913
 - ◻ DMC-970
 - ★ DMC-973
 - ⊕ DMC-995
 - ✓ DMC-996
 - ◻ DMC-3022
 - ◻ DMC-3023
 - ◻ DMC-3024
 - ◻ DMC-3325
 - ◻ DMC-3756
 - ◻ DMC-3781
 - ◻ DMC-3811
 - ◻ DMC-3817
 - ◻ DMC-3843
 - ◻ DMC-3845

Bird on Branch

Author: DiamondPaintingPatterns.net
Grid Size: 120W x 80H
Design Area: 12,00" x 7,40" (120 x 74 stitches)

Legend:

	DMC 310 black (27 stitches)		DMC 3023 brown gray - lt (59 stitches)
	DMC 703 chartreuse (653 stitches)		DMC 3024 brown gray - vy lt (108 stitches)
	DMC 833 golden olive - lt (36 stitches)		DMC 3325 baby blue - lt (72 stitches)
	DMC 913 nile green - md (48 stitches)		DMC 3756 baby blue - ul vy lt (180 stitches)
	DMC 970 pumpkin - lt (13 stitches)		DMC 3781 mocha brown - dk (284 stitches)
	DMC 973 canary - br (39 stitches)		DMC 3811 turquoise - vy lt (77 stitches)
	DMC 995 electric blue - dk (137 stitches)		DMC 3817 celadon green - lt (54 stitches)
	DMC 996 electric blue - md (244 stitches)		DMC 3843 electric blue (374 stitches)
	DMC 3022 brown gray - md (39 stitches)		DMC 3845 bright turquoise - md (538 stitches)

Pattern shape: 2.5 mm (1/10 inch) square

Free for download and print.

This pattern is for personal and noncommercial use only.
Don't redistribute or sell this pattern on other market or pattern platforms.

Visit <https://DiamondPaintingPatterns.net> for more free printable diamond painting patterns.

How to print this PDF at 100 percent (actual size)

When you need to print a document precisely at its actual size, but the output that emerges from your home printer appears too large or too small, check your PDF application for settings that force its output at more or less than actual size.

This is what you need to do for printing without resizing:

- Open your PDF document
- Select 'Print...' in the File menu
- Within the 'Print' settings window, set the scale to 100%
- and press 'Print' to print at 100% of the original PDF.