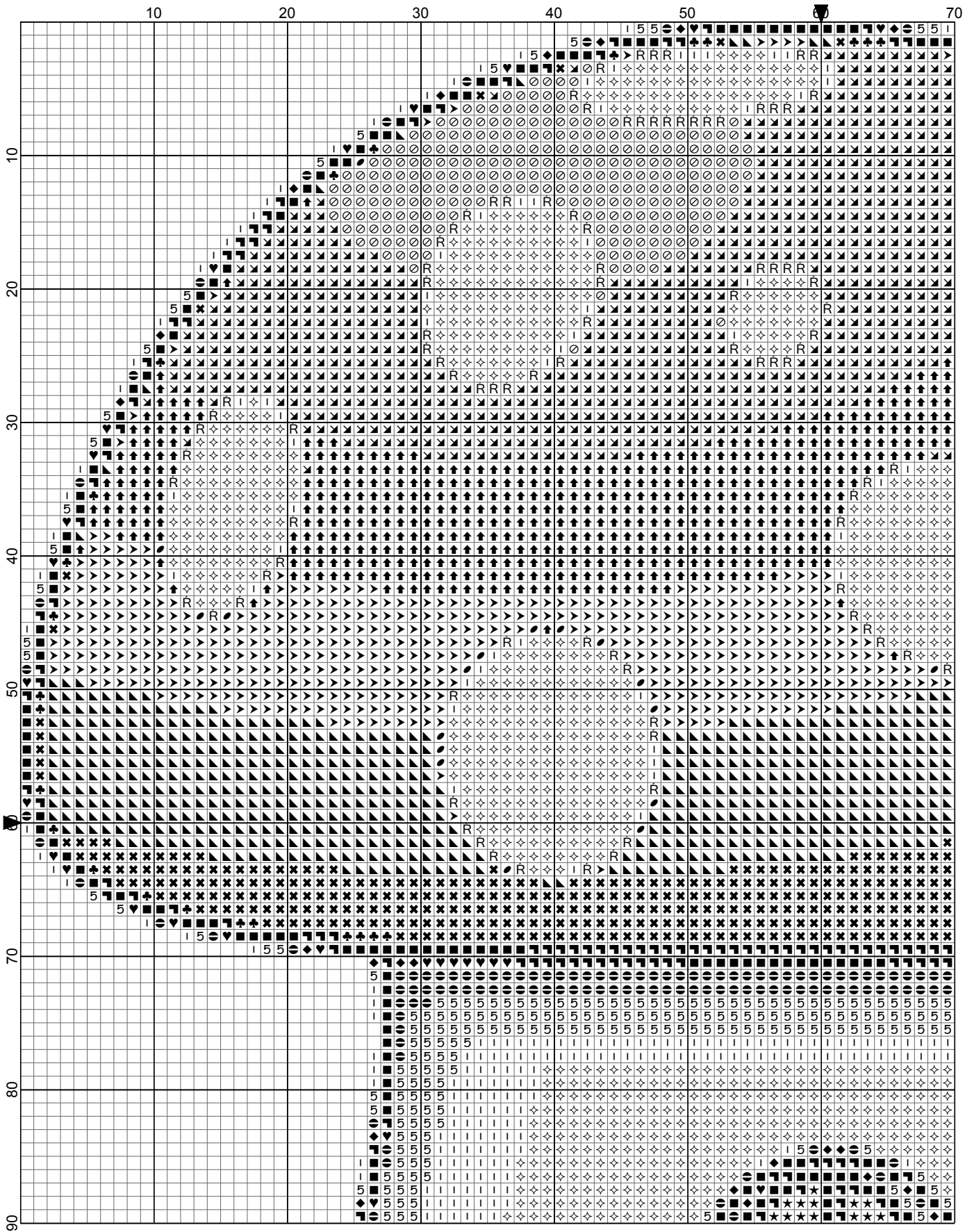
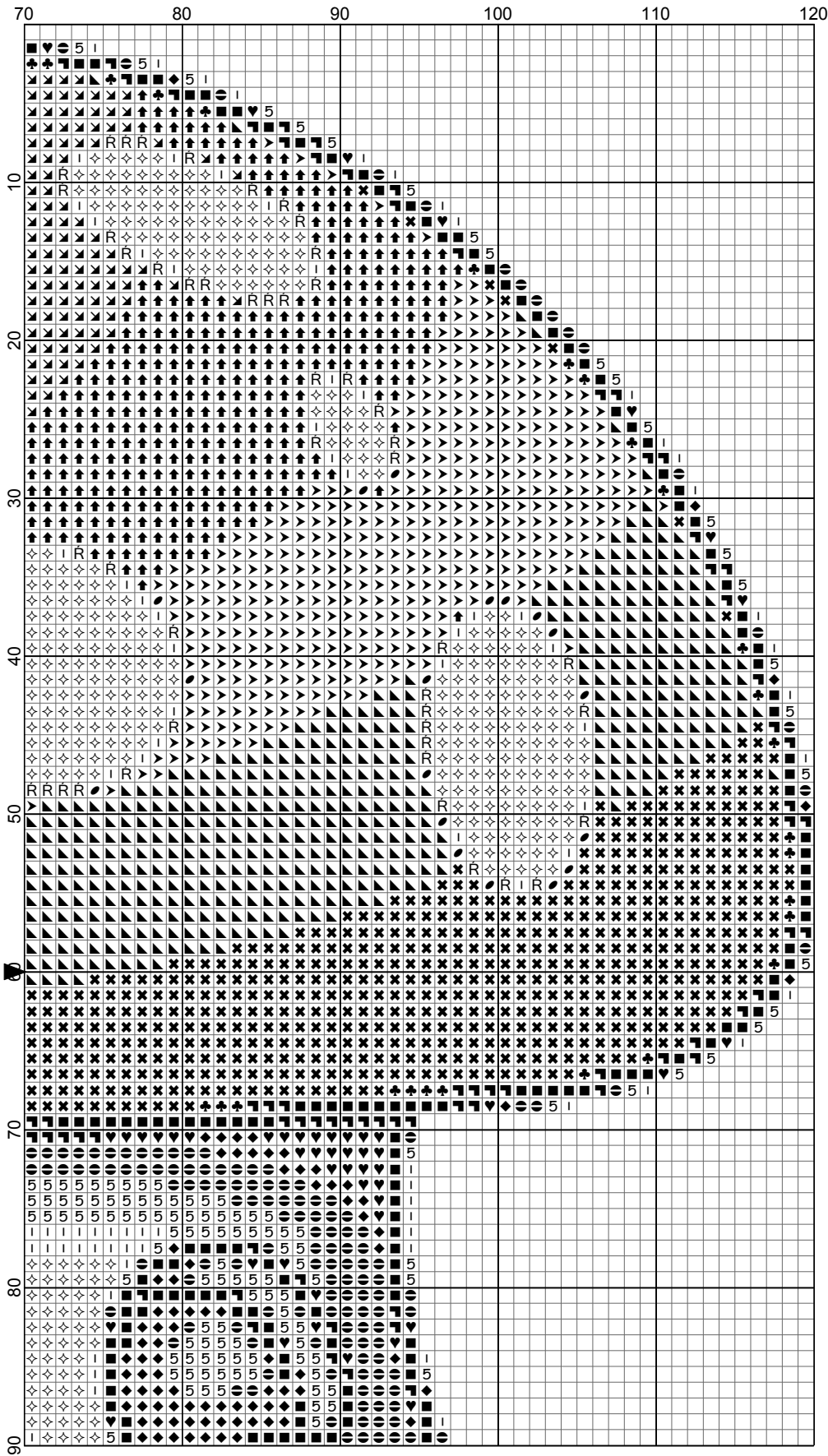


Mushroom House

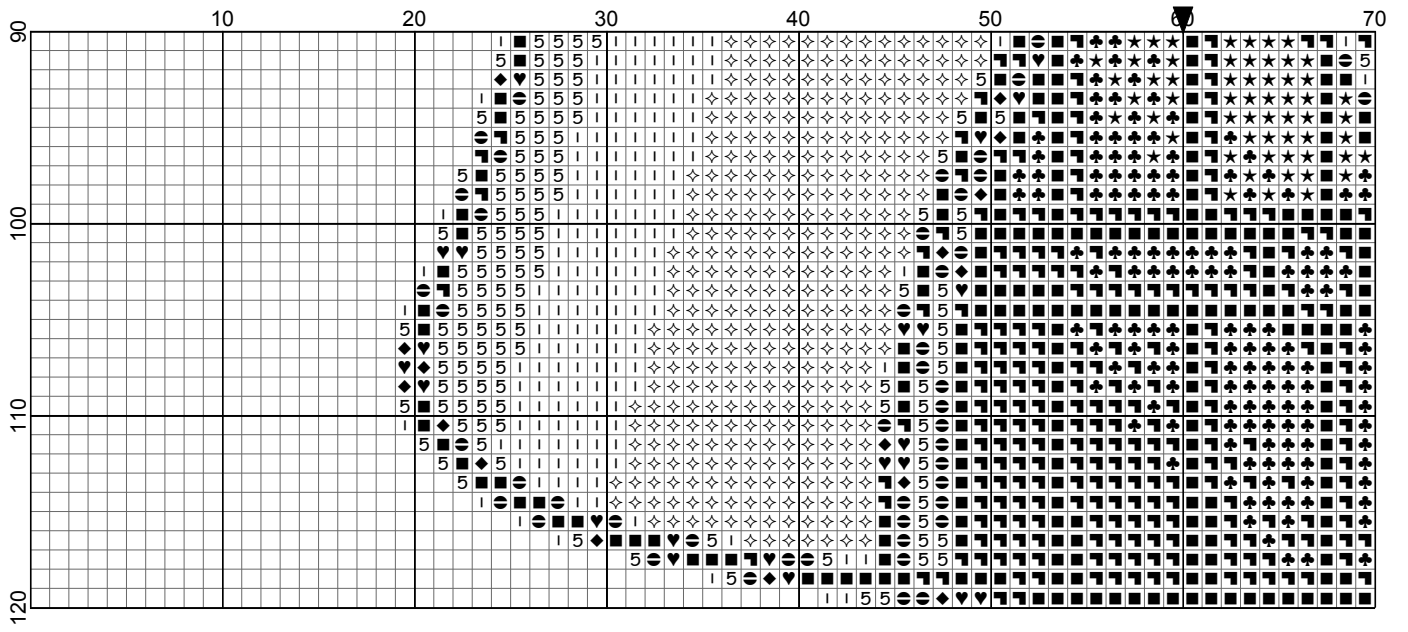


Mushroom House

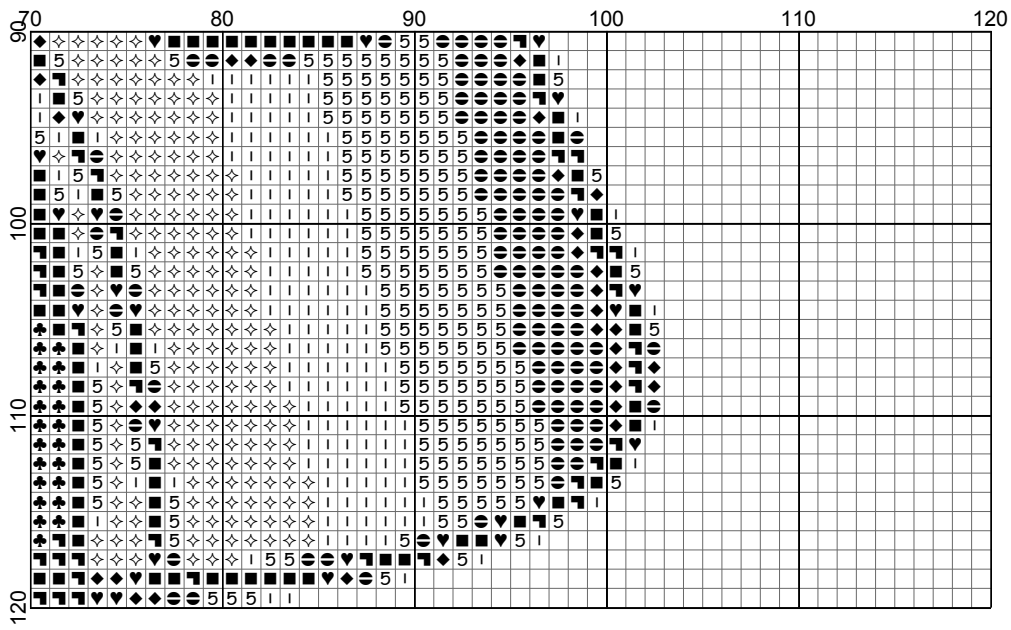


- Legend:
- ▶ DMC-304
 - DMC-310
 - ▲ DMC-321
 - ▼ DMC-350
 - ◀ DMC-498
 - ◆ DMC-535
 - ⊖ DMC-640
 - ⊕ DMC-644
 - ⊗ DMC-816
 - ⊛ DMC-838
 - ★ DMC-839
 - ♥ DMC-844
 - ⊞ DMC-938
 - ⊚ DMC-3705
 - ⊙ DMC-3830
 - Ⓡ DMC-3833
 - ◇ DMC-3865
 - Ⓛ DMC-3866

Mushroom House















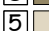





Mushroom House



Mushroom House

Author: DiamondPaintingPatterns.net
Grid Size: 120W x 120H
Design Area: 12,00" x 12,00" (120 x 120 stitches)

Legend:

	DMC 304	christmas red - md	(968 stitches)		DMC 838	beige brown - vy dk	(220 stitches)
	DMC 310	black	(610 stitches)		DMC 839	beige brown - dk	(72 stitches)
	DMC 321	christmas red	(929 stitches)		DMC 844	beaver gray - ul dk	(125 stitches)
	DMC 350	coral - md	(933 stitches)		DMC 938	coffee brown - ul dk	(473 stitches)
	DMC 498	christmas red - dk	(1094 stitches)		DMC 3705	melon - dk	(275 stitches)
	DMC 535	ash gray - vy lt	(155 stitches)		DMC 3830	terra cotta	(36 stitches)
	DMC 640	beige gray - vy dk	(422 stitches)		DMC 3833	raspberry - lt	(140 stitches)
	DMC 644	beige gray - md	(672 stitches)		DMC 3865	winter white	(1892 stitches)
	DMC 816	garnet	(938 stitches)		DMC 3866	mocha brown - ul vy lt	(669 stitches)

Pattern shape: 2.5 mm (1/10 inch) square

Free for download and print.

This pattern is for personal and noncommercial use only.
Don't redistribute or sell this pattern on other market or pattern platforms.

Visit <https://DiamondPaintingPatterns.net> for more free printable diamond painting patterns.

How to print this PDF at 100 percent (actual size)

When you need to print a document precisely at its actual size, but the output that emerges from your home printer appears too large or too small, check your PDF application for settings that force its output at more or less than actual size.

This is what you need to do for printing without resizing:

- Open your PDF document
- Select 'Print...' in the File menu
- Within the 'Print' settings window, set the scale to 100%
- and press 'Print' to print at 100% of the original PDF.