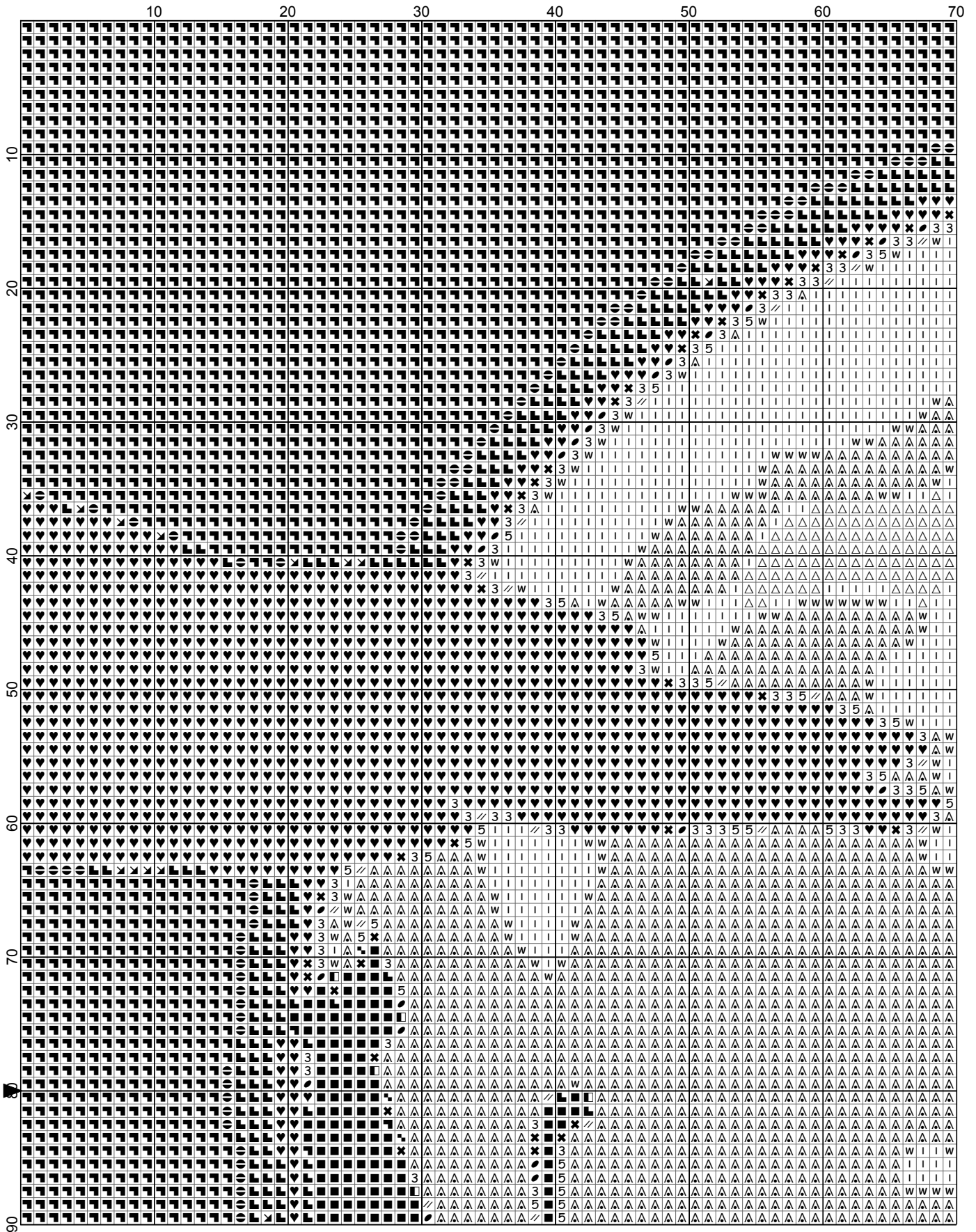
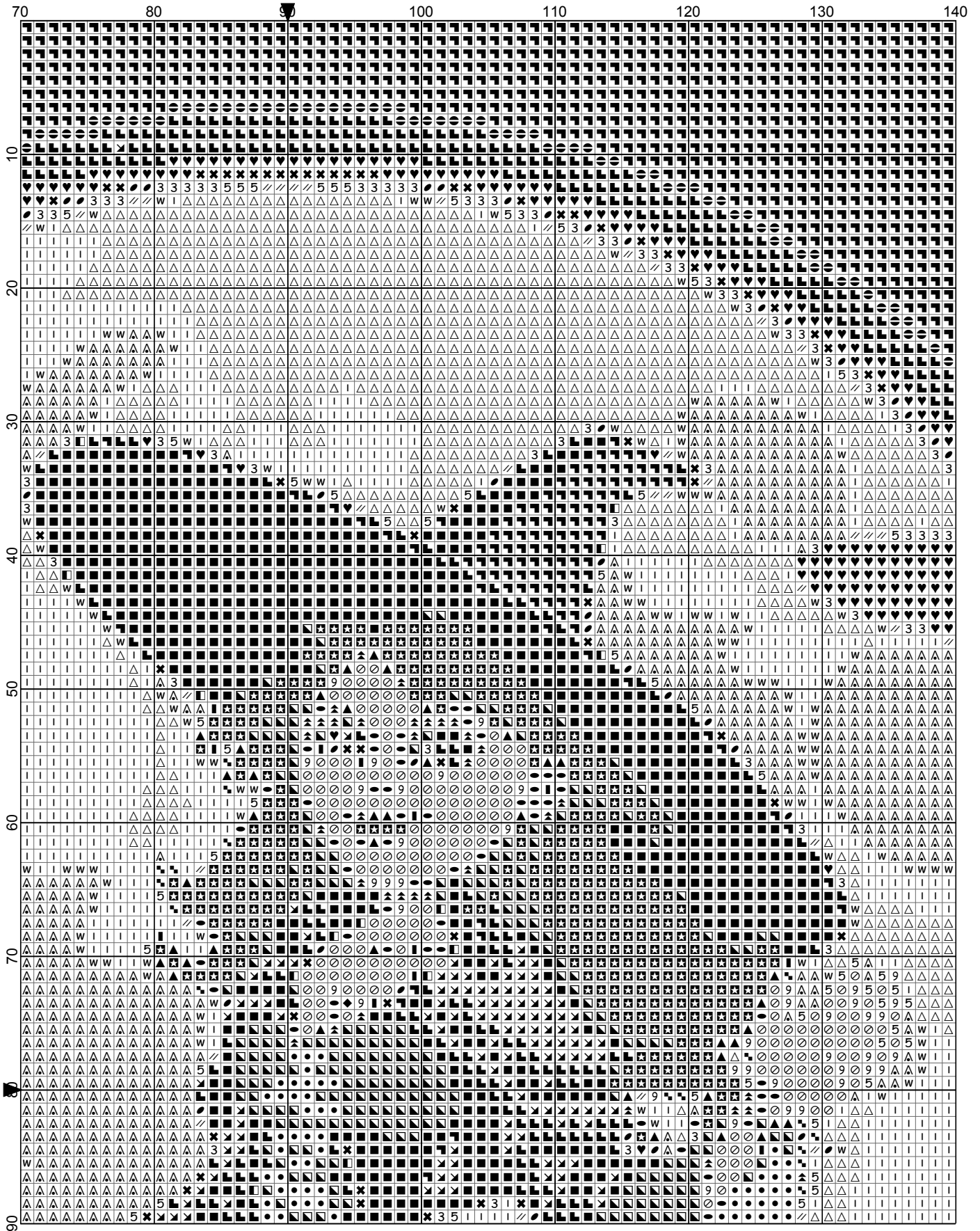


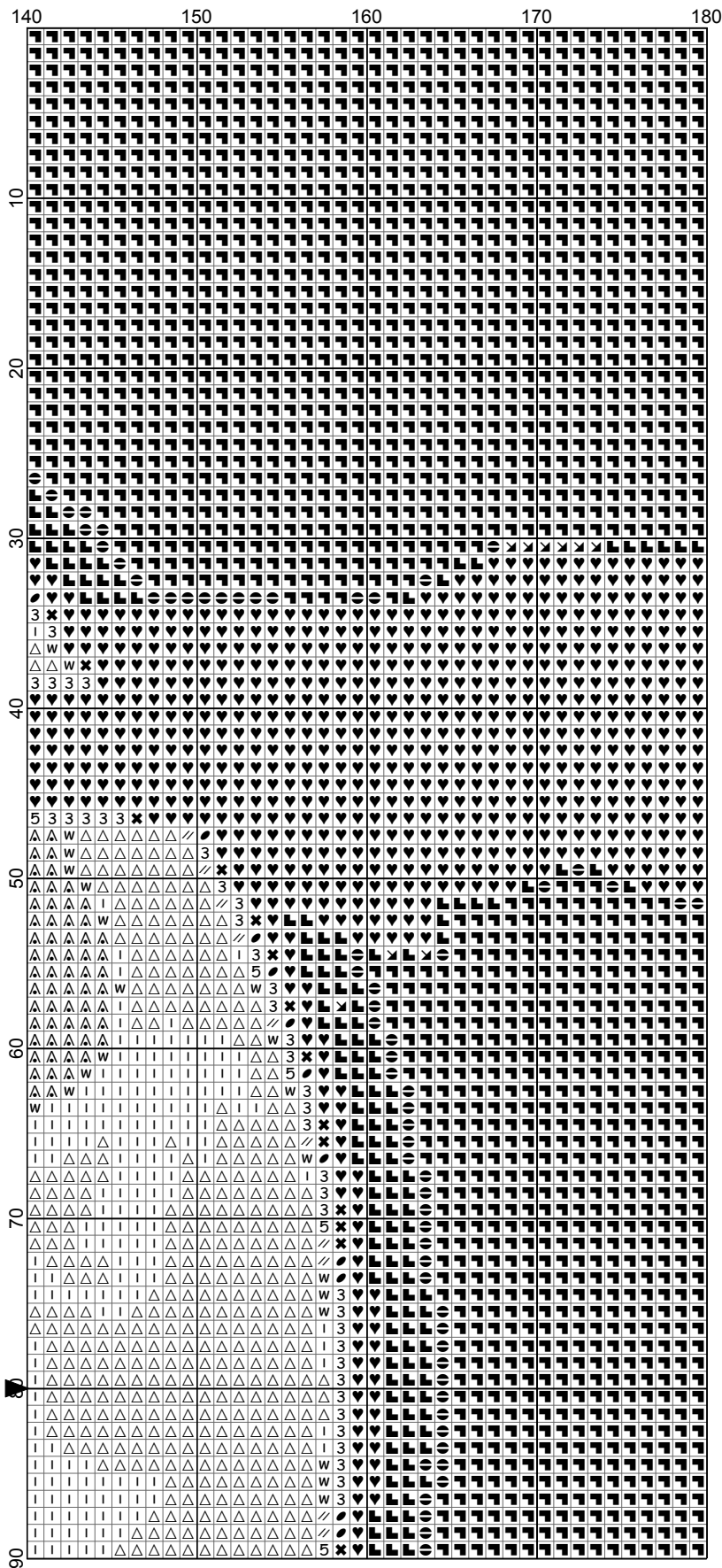
Witch Flying at Night



Witch Flying at Night

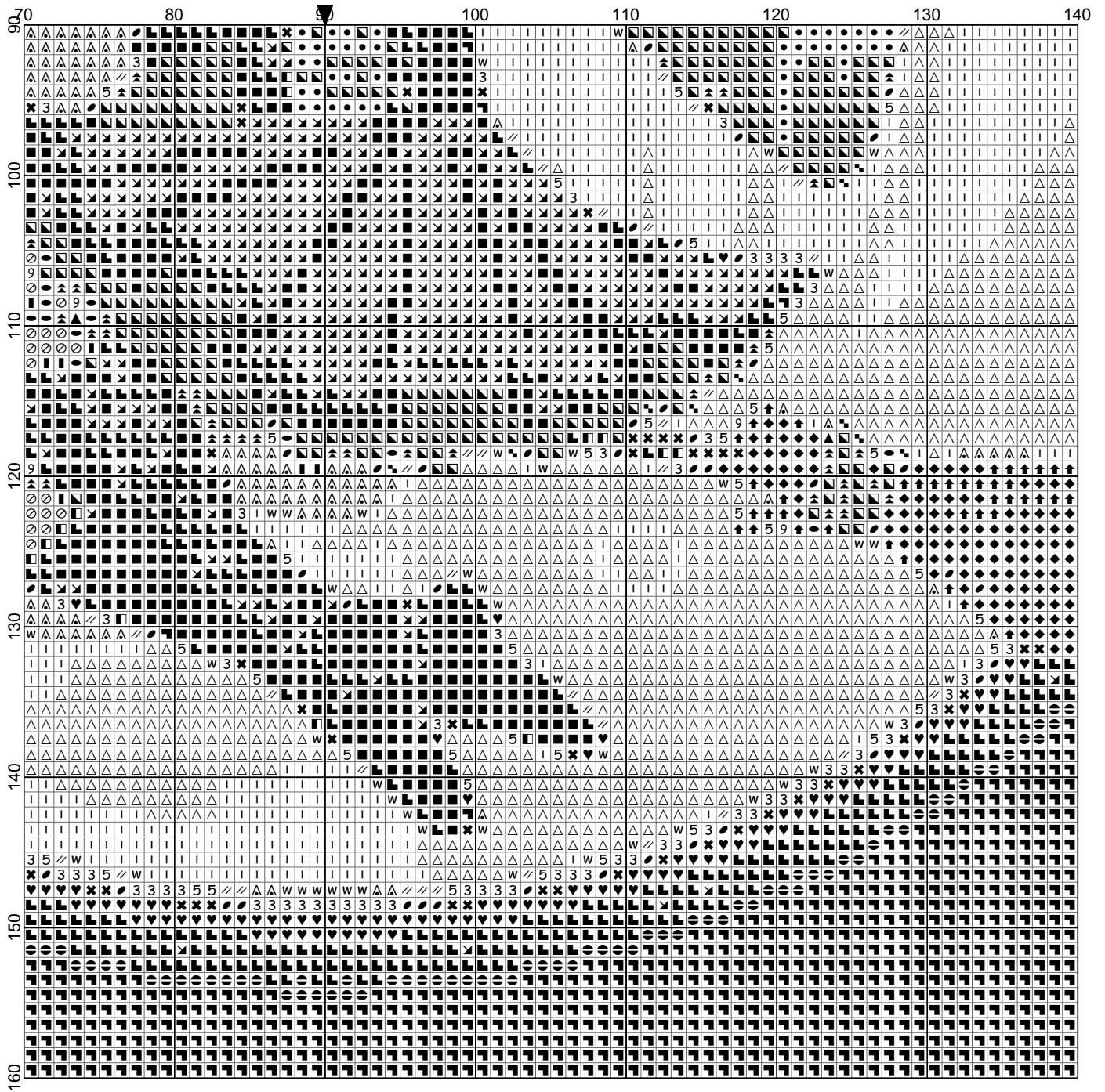


Witch Flying at Night

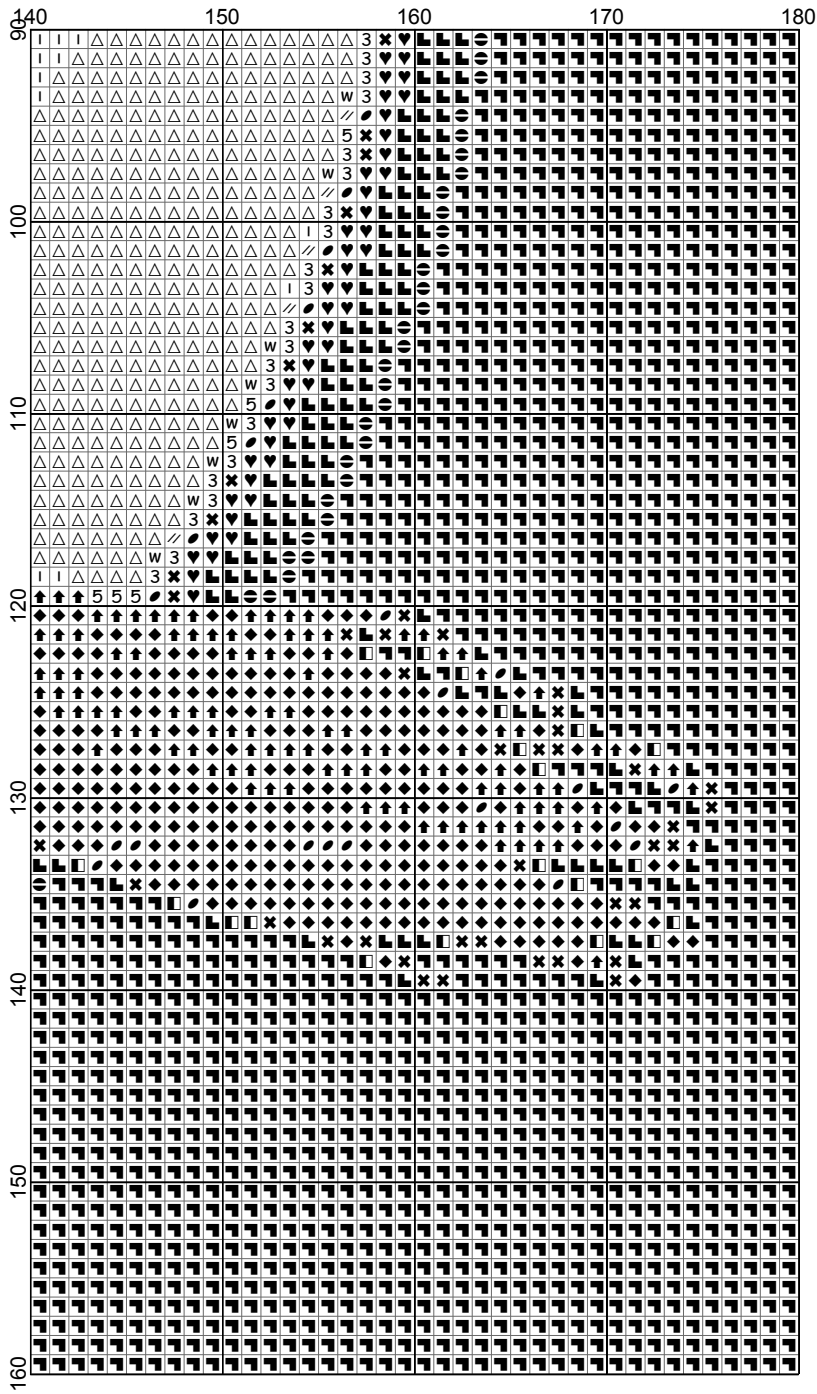


- Legend:
- DMC-310
 - DMC-317
 - DMC-356
 - DMC-413
 - DMC-677
 - DMC-739
 - DMC-814
 - DMC-816
 - DMC-823
 - DMC-939
 - DMC-3047
 - DMC-3371
 - DMC-3772
 - DMC-3777
 - DMC-3781
 - DMC-3782
 - DMC-3790
 - DMC-3799
 - DMC-3823
 - DMC-3828
 - DMC-3829
 - DMC-3830
 - DMC-3857
 - DMC-3858
 - DMC-3859
 - DMC-3860
 - DMC-3861
 - DMC-3864

Witch Flying at Night









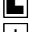


















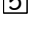


Witch Flying at Night



Witch Flying at Night

Author: DiamondPaintingPatterns.net
Grid Size: 180W x 160H
Design Area: 18,00" x 16,00" (180 x 160 stitches)

Legend:

	DMC 310	black	(1554 stitches)		DMC 3781	mocha brown - dk	(80 stitches)
	DMC 317	pewter gray	(2436 stitches)		DMC 3782	mocha brown - lt	(145 stitches)
	DMC 356	terra cotta - md	(348 stitches)		DMC 3790	beige gray - ul dk	(369 stitches)
	DMC 413	pewter gray - dk	(1585 stitches)		DMC 3799	pewter gray - vy dk	(604 stitches)
	DMC 677	old gold - vy lt	(2417 stitches)		DMC 3823	yellow - ul pl	(2938 stitches)
	DMC 739	tan - ul vy lt	(2876 stitches)		DMC 3828	hazel nut brown	(154 stitches)
	DMC 814	garnet - dk	(598 stitches)		DMC 3829	old gold - vy dk	(431 stitches)
	DMC 816	garnet	(418 stitches)		DMC 3830	terra cotta	(55 stitches)
	DMC 823	navy blue - dk	(407 stitches)		DMC 3857	rosewood - dk	(92 stitches)
	DMC 939	navy blue - vy dk	(9943 stitches)		DMC 3858	rosewood - md	(79 stitches)
	DMC 3047	yellow beige - lt	(368 stitches)		DMC 3859	rosewood - lt	(37 stitches)
	DMC 3371	black brown	(106 stitches)		DMC 3860	cocoa	(183 stitches)
	DMC 3772	desert sand - vy dk	(26 stitches)		DMC 3861	cocoa - lt	(340 stitches)
	DMC 3777	terra cotta - vy dk	(42 stitches)		DMC 3864	mocha beige - lt	(169 stitches)

Pattern shape: 2.5 mm (1/10 inch) square

Free for download and print.

This pattern is for personal and noncommercial use only.
Don't redistribute or sell this pattern on other market or pattern platforms.

Visit <https://DiamondPaintingPatterns.net> for more free printable diamond painting patterns.

How to print this PDF at 100 percent (actual size)

When you need to print a document precisely at its actual size, but the output that emerges from your home printer appears too large or too small, check your PDF application for settings that force its output at more or less than actual size.

This is what you need to do for printing without resizing:

- Open your PDF document
- Select 'Print...' in the File menu
- Within the 'Print' settings window, set the scale to 100%
- and press 'Print' to print at 100% of the original PDF.