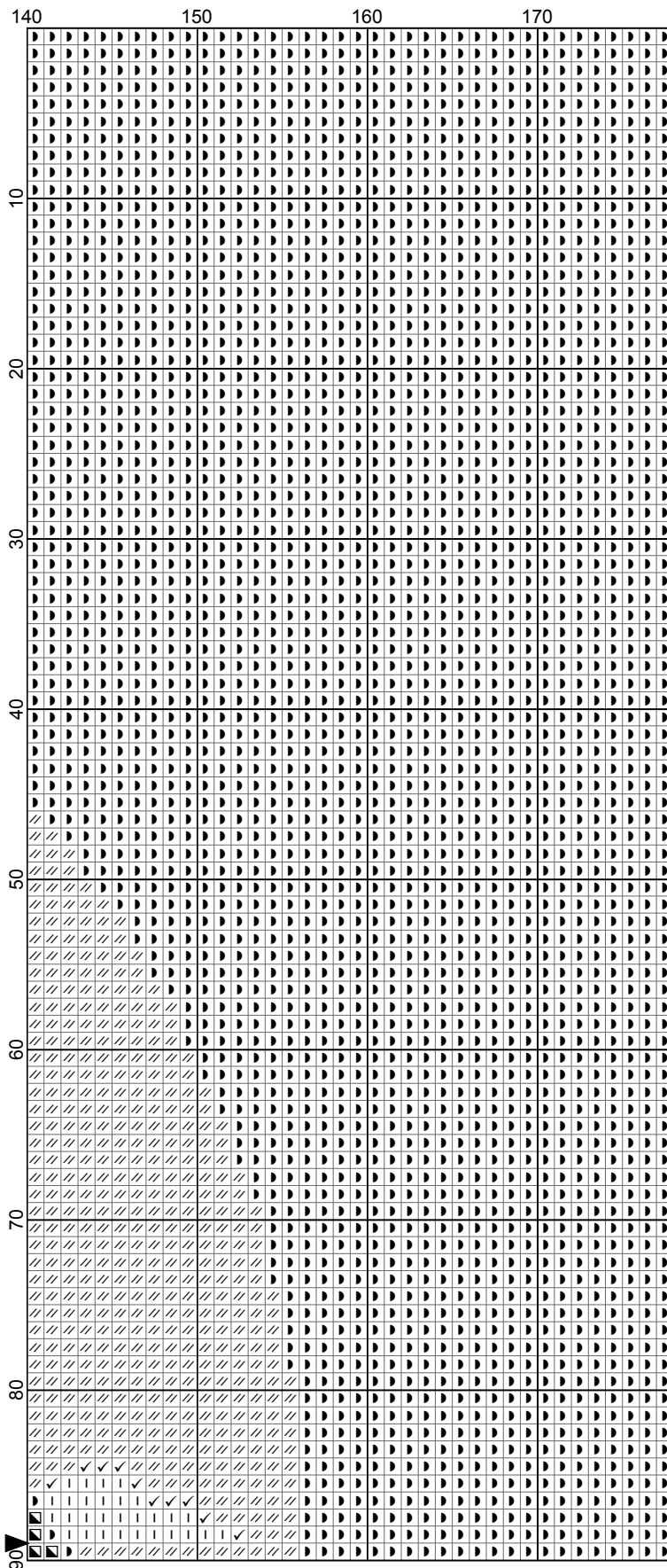
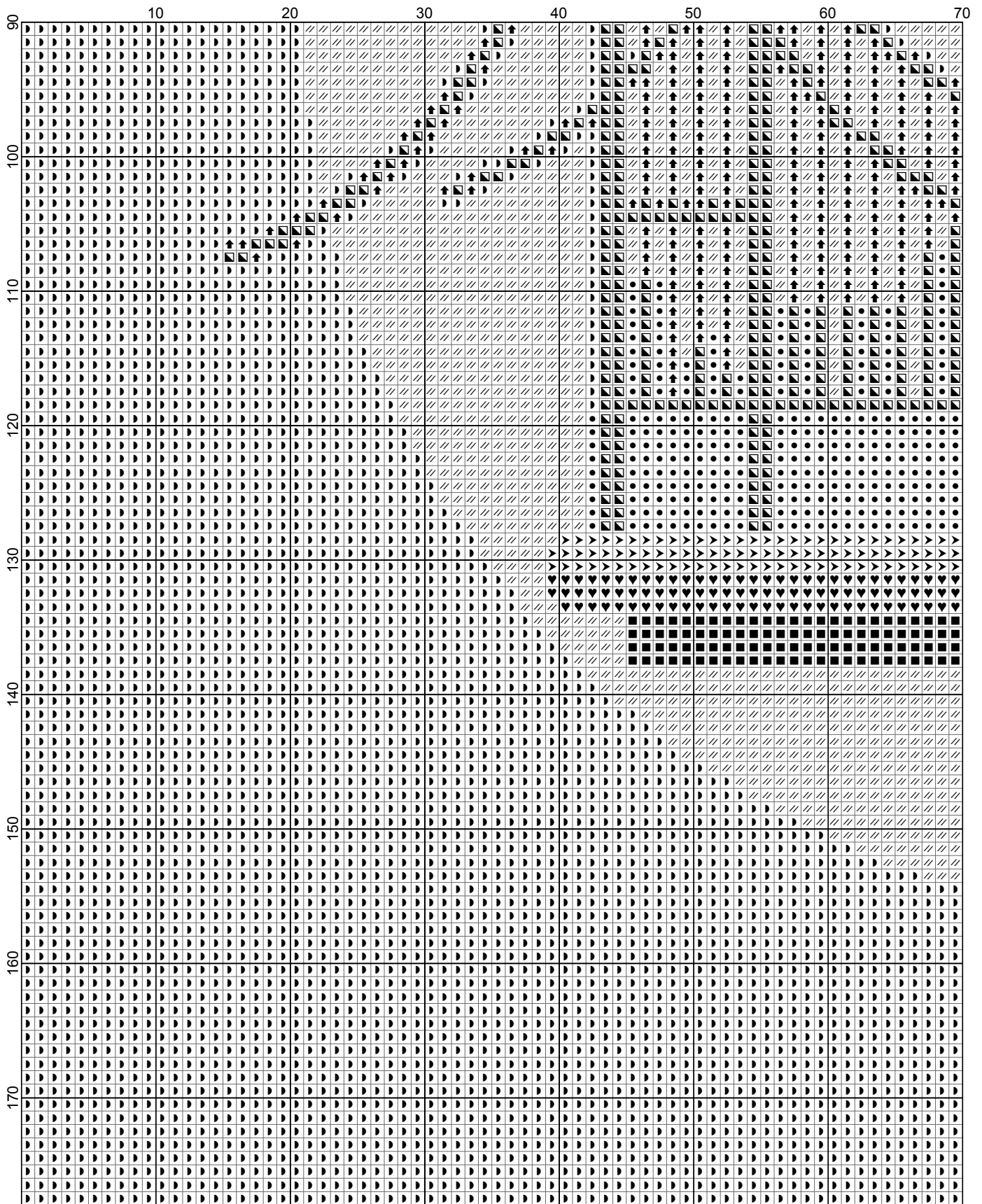


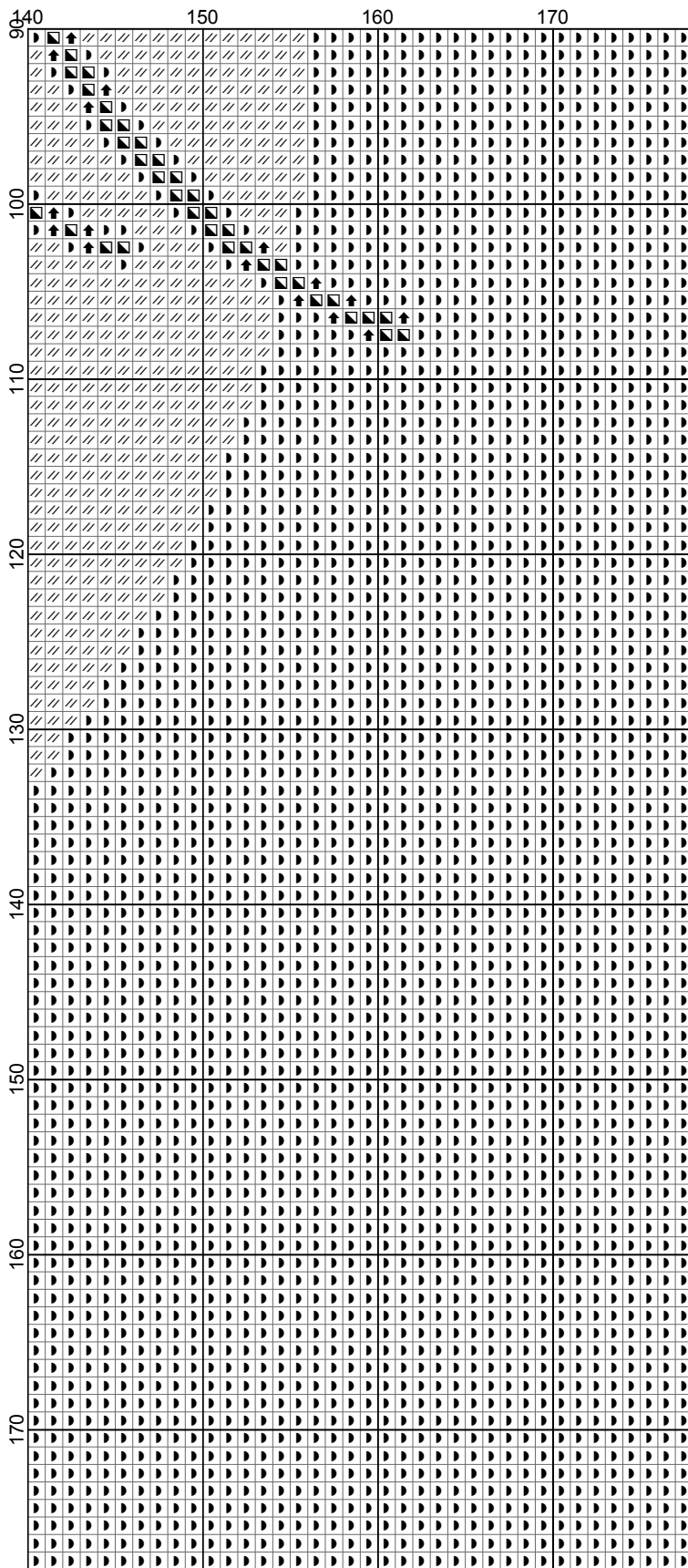
New York



- Legend:
- DMC-221
 - DMC-318
 - DMC-799
 - DMC-919
 - DMC-989
 - DMC-3346
 - DMC-3712
 - DMC-3727
 - DMC-3755
 - DMC-3766
 - DMC-3787
 - DMC-3801
 - DMC-3817
 - DMC-3830
 - DMC-3841
 - DMC-3857
 - DMC-3861
 - DMC-Ecru
















New York



New York

Author: DiamondPaintingPatterns.net
Grid Size: 178W x 178H
Design Area: 17,80" x 17,80" (178 x 178 stitches)

Legend:

	DMC 221 shell pink - vy dk (773 stitches)		DMC 3766 peacock blue - lt (17438 stitches)
	DMC 318 steel gray - lt (666 stitches)		DMC 3787 brown gray - dk (352 stitches)
	DMC 799 delft blue - md (1119 stitches)		DMC 3801 christmas red - lt (297 stitches)
	DMC 919 red copper (150 stitches)		DMC 3817 celadon green - lt (8387 stitches)
	DMC 989 forest green (298 stitches)		DMC 3830 terra cotta (13 stitches)
	DMC 3346 hunter green (298 stitches)		DMC 3841 pale baby blue (117 stitches)
	DMC 3712 salmon - md (27 stitches)		DMC 3857 rosewood - dk (445 stitches)
	DMC 3727 antique mauve - lt (34 stitches)		DMC 3861 cocoa - lt (39 stitches)
	DMC 3755 baby blue (722 stitches)		DMC Ecru ecru (509 stitches)

Pattern shape: 2.5 mm (1/10 inch) square

Free for download and print.

This pattern is for personal and noncommercial use only.
Don't redistribute or sell this pattern on other market or pattern platforms.

Visit <https://DiamondPaintingPatterns.net> for more free printable diamond painting patterns.

How to print this PDF at 100 percent (actual size)

When you need to print a document precisely at its actual size, but the output that emerges from your home printer appears too large or too small, check your PDF application for settings that force its output at more or less than actual size.

This is what you need to do for printing without resizing:

- Open your PDF document
- Select 'Print...' in the File menu
- Within the 'Print' settings window, set the scale to 100%
- and press 'Print' to print at 100% of the original PDF.