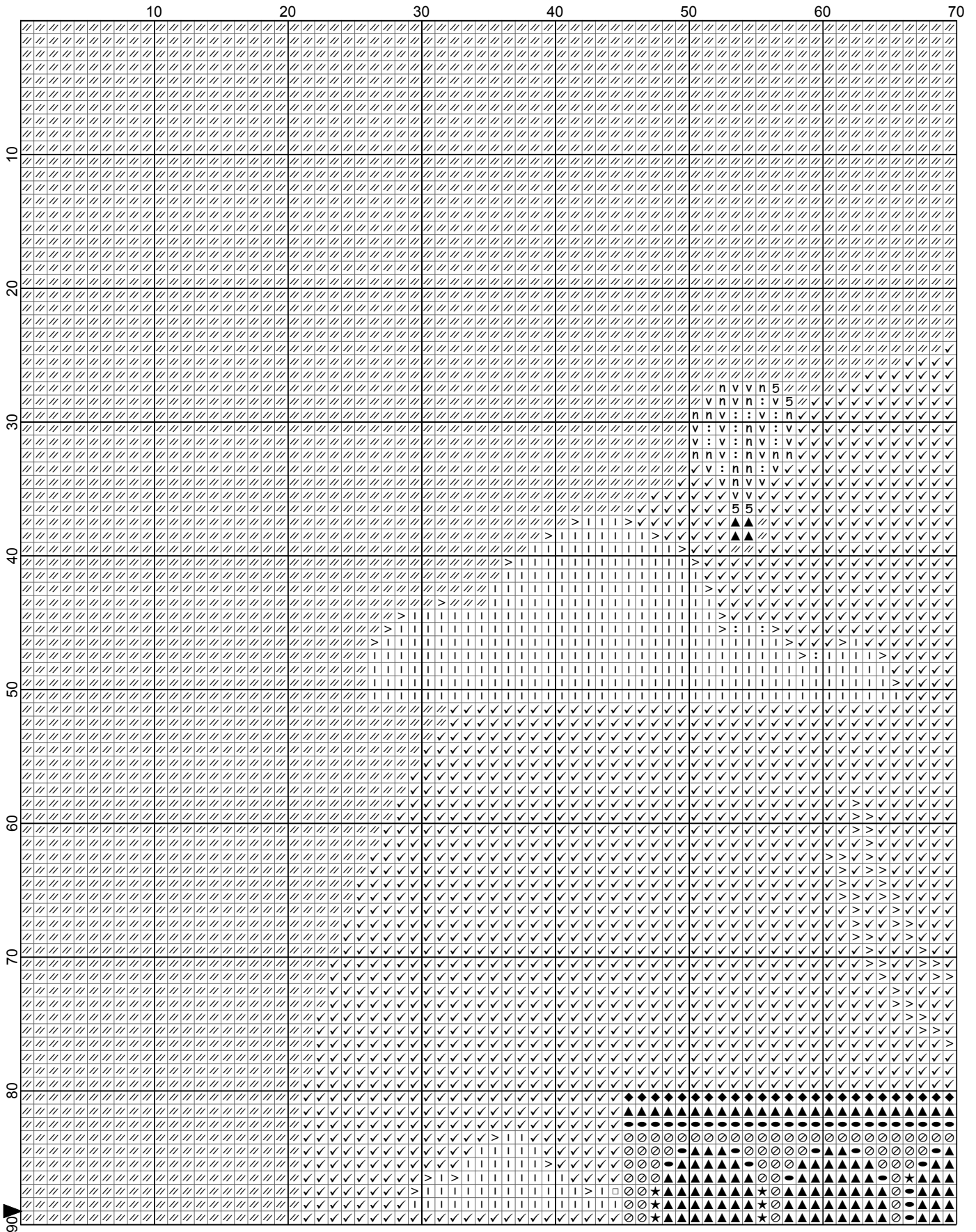
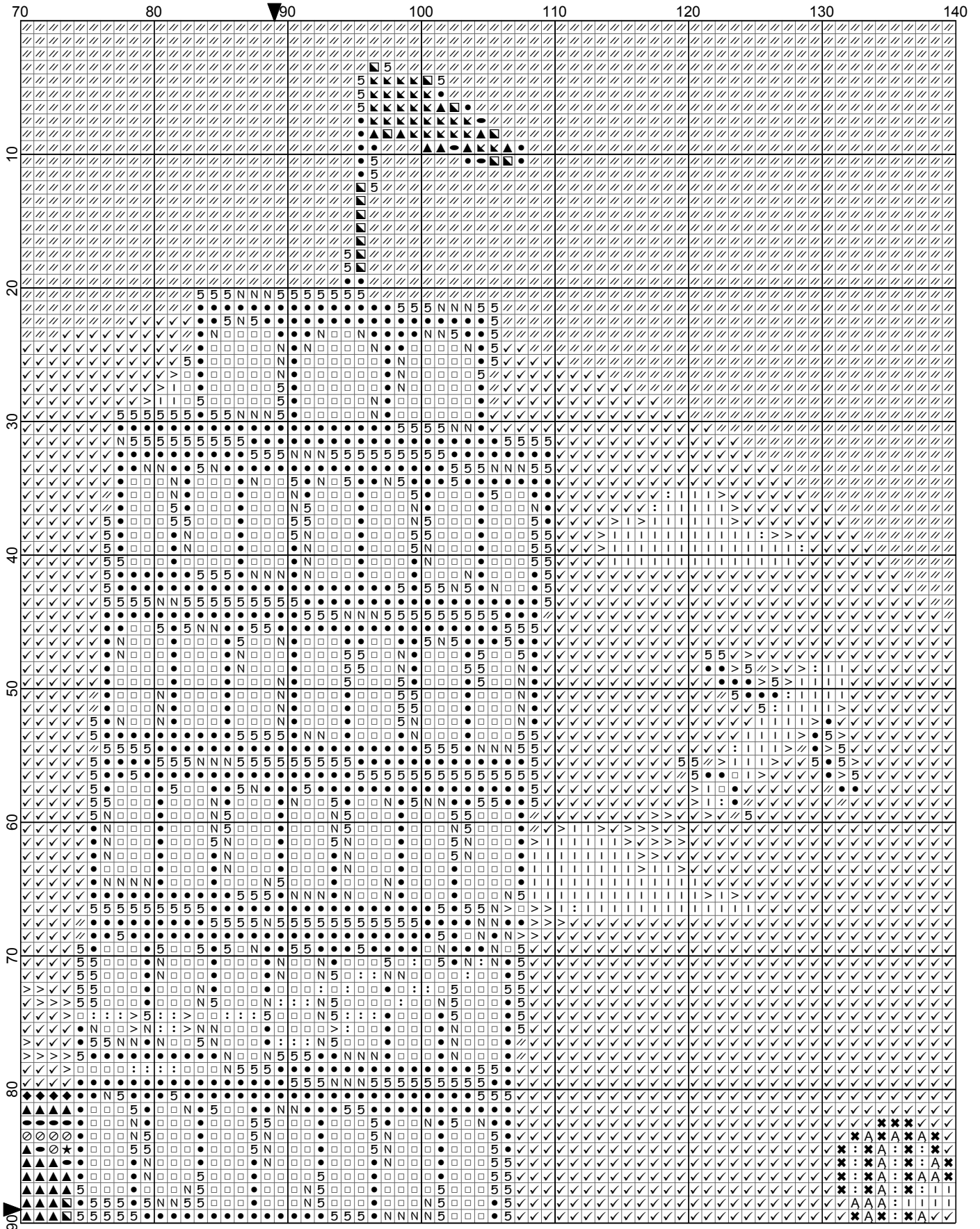


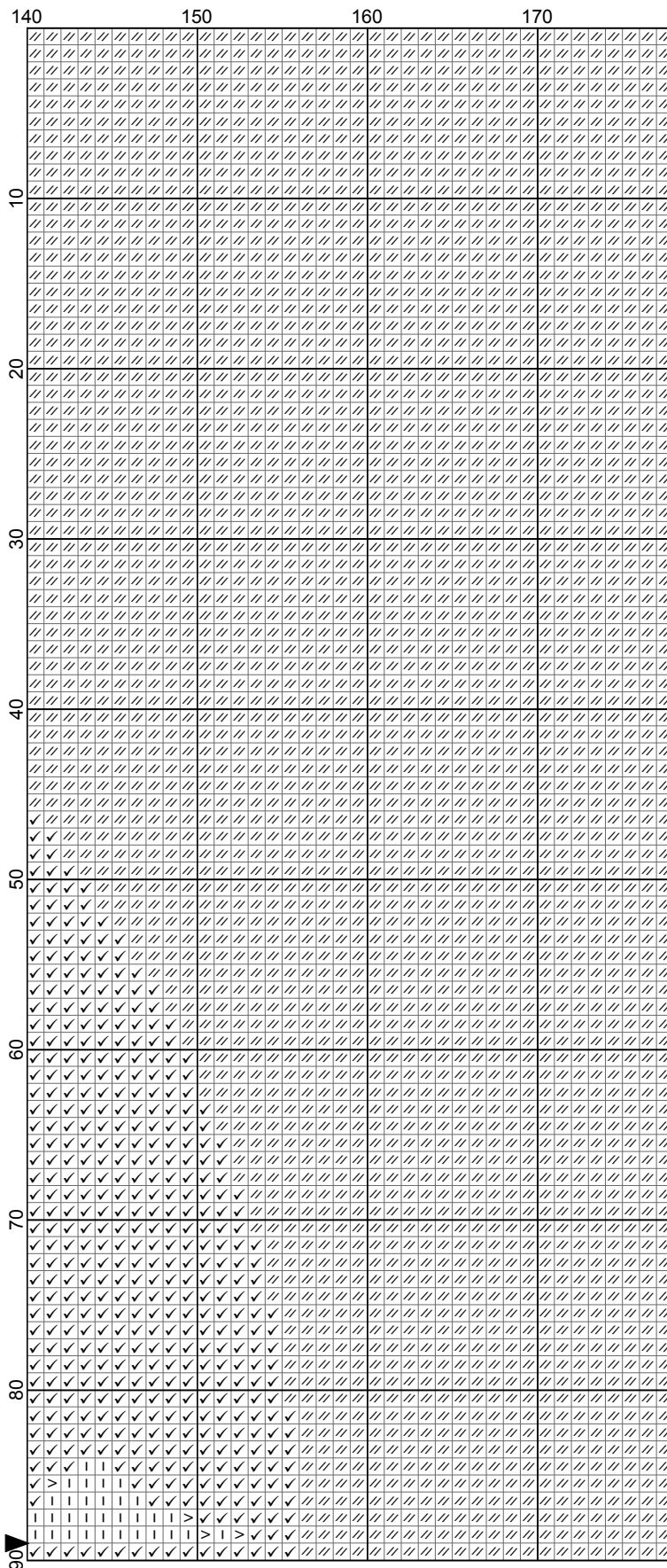
Roma Italy



Roma Italy

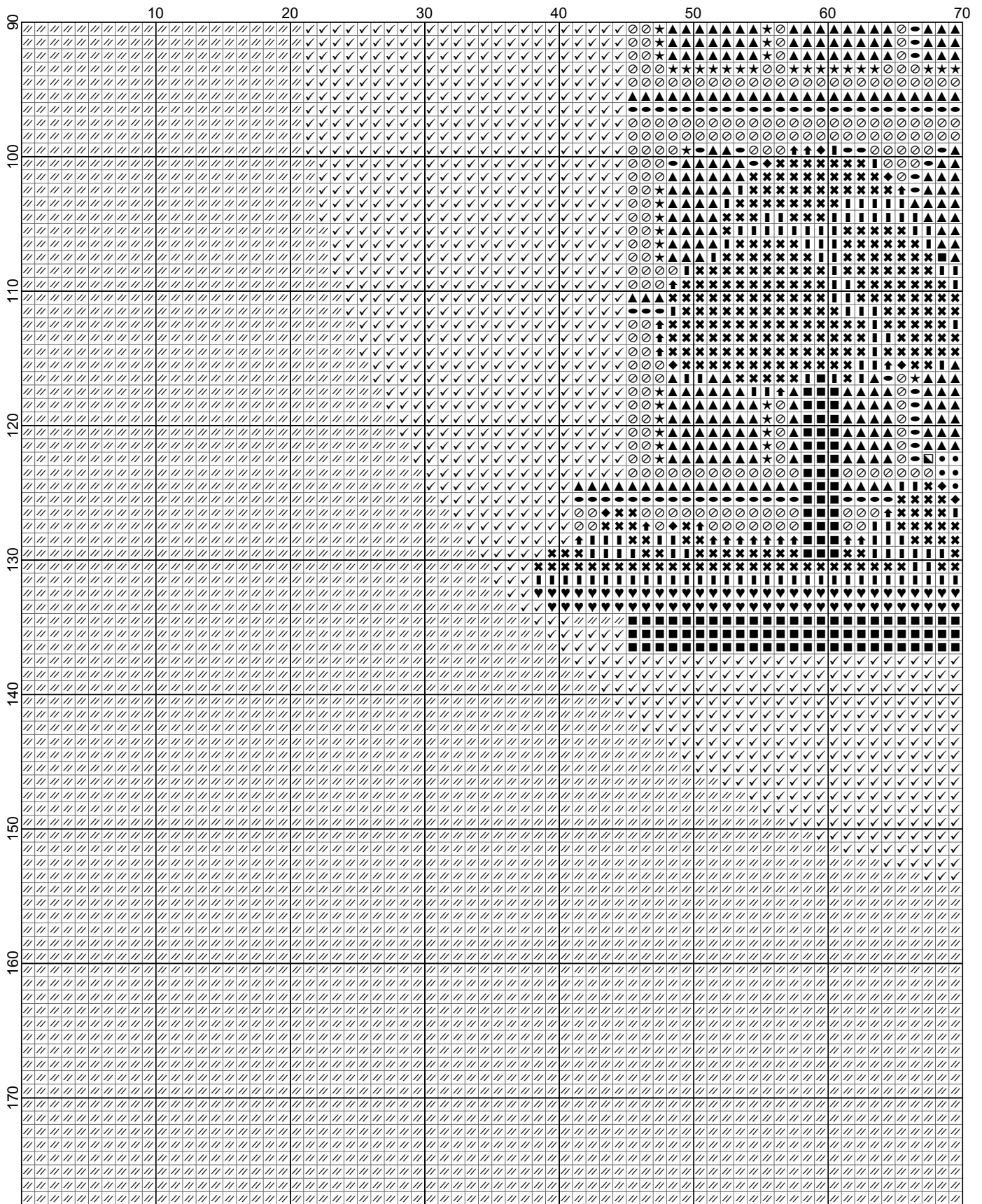


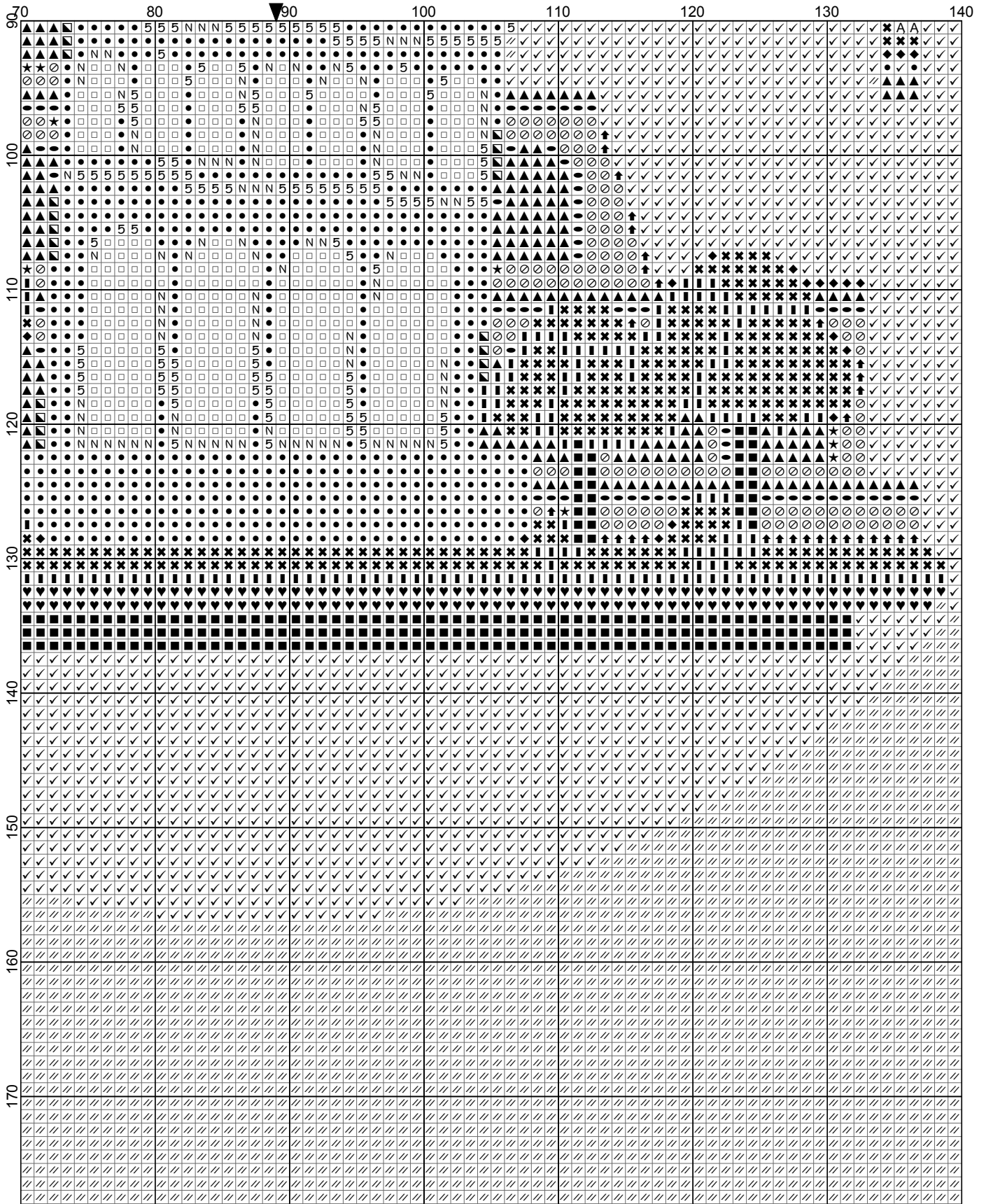
# Roma Italy



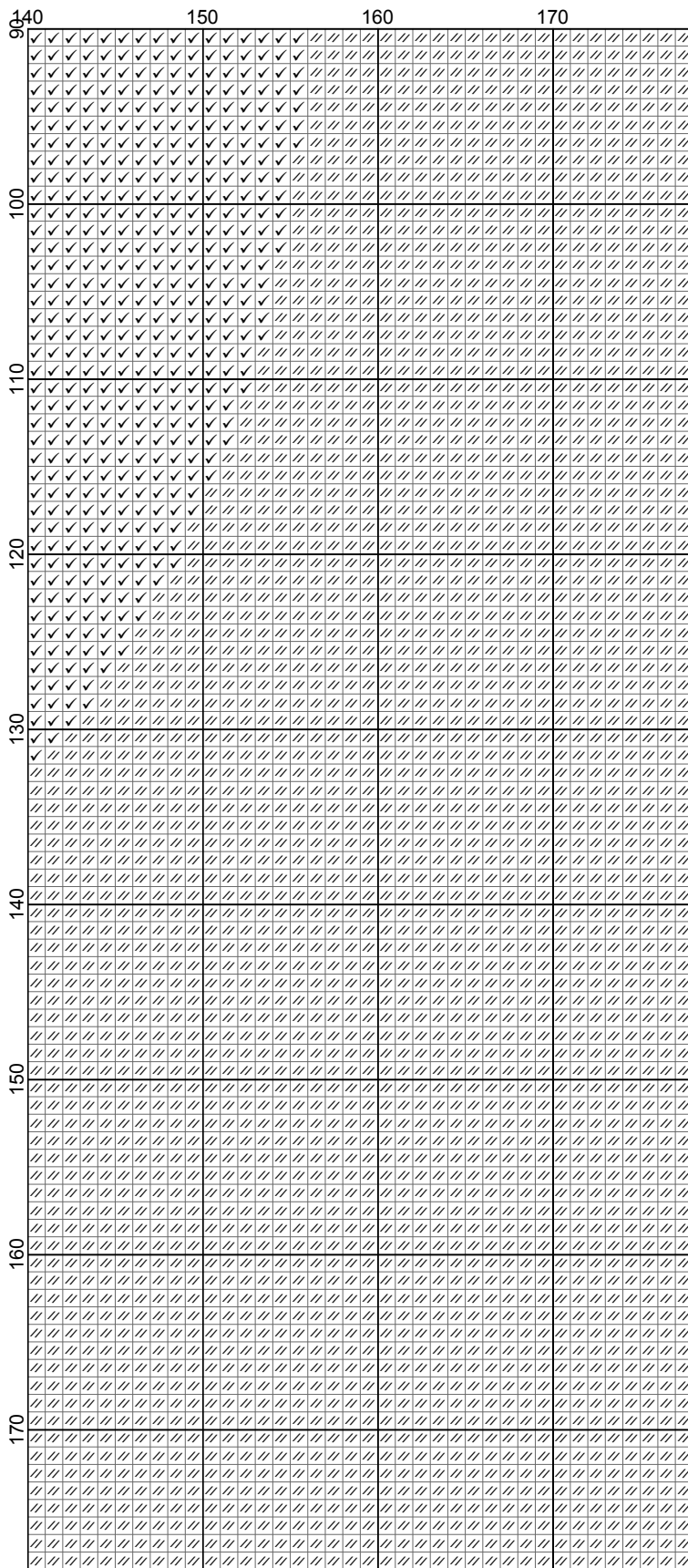
- Legend:
- DMC-168
  - DMC-318
  - N DMC-415
  - ▲ DMC-632
  - ✘ DMC-906
  - ⊗ DMC-977
  - ◻ DMC-3041
  - ↑ DMC-3045
  - ◆ DMC-3053
  - ★ DMC-3064
  - :
  - v DMC-3341
  - ♥ DMC-3346
  - ▮ DMC-3347
  - A DMC-3348
  - > DMC-3753
  - | DMC-3756
  - ∕ DMC-3766
  - n DMC-3771
  - DMC-3772
  - DMC-3787
  - ✓ DMC-3817
  - 5 DMC-3840
  - ◀ DMC-3857

Roma Italy
















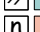












Roma Italy



# Roma Italy

**Author:** DiamondPaintingPatterns.net  
**Grid Size:** 178W x 178H  
**Design Area:** 17,80" x 17,80" (178 x 178 stitches)

## Legend:

	DMC 168 pewter - vy lt (1280 stitches)		DMC 3346 hunter green (200 stitches)
	DMC 318 steel gray - lt (1438 stitches)		DMC 3347 yellow green - md (290 stitches)
	DMC 415 pearl gray (305 stitches)		DMC 3348 yellow green - lt (17 stitches)
	DMC 632 desert sand - ul vy dk (589 stitches)		DMC 3753 antique blue - ul vy (149 stitches)
	DMC 906 parrot green - md (667 stitches)		DMC 3756 baby blue - ul vy lt (559 stitches)
	DMC 977 golden brown - lt (451 stitches)		DMC 3766 peacock blue - lt (17084 stitches)
	DMC 3041 antique violet - md (37 stitches)		DMC 3771 terra cotta - ul vy lt (17 stitches)
	DMC 3045 yellow beige - dk (53 stitches)		DMC 3772 desert sand - vy dk (179 stitches)
	DMC 3053 green gray (57 stitches)		DMC 3787 brown gray - dk (332 stitches)
	DMC 3064 desert sand (59 stitches)		DMC 3817 celadon green - lt (7270 stitches)
	DMC 3072 beaver gray - vy lt (73 stitches)		DMC 3840 lavender blue - lt (525 stitches)
	DMC 3341 apricot (24 stitches)		DMC 3857 rosewood - dk (29 stitches)

**Pattern shape:** 2.5 mm (1/10 inch) square

## Free for download and print.

This pattern is for personal and noncommercial use only.  
Don't redistribute or sell this pattern on other market or pattern platforms.

Visit <https://DiamondPaintingPatterns.net> for more free printable diamond painting patterns.

## How to print this PDF at 100 percent (actual size)

When you need to print a document precisely at its actual size, but the output that emerges from your home printer appears too large or too small, check your PDF application for settings that force its output at more or less than actual size.

This is what you need to do for printing without resizing:

- Open your PDF document
- Select 'Print...' in the File menu
- Within the 'Print' settings window, set the scale to 100%
- and press 'Print' to print at 100% of the original PDF.