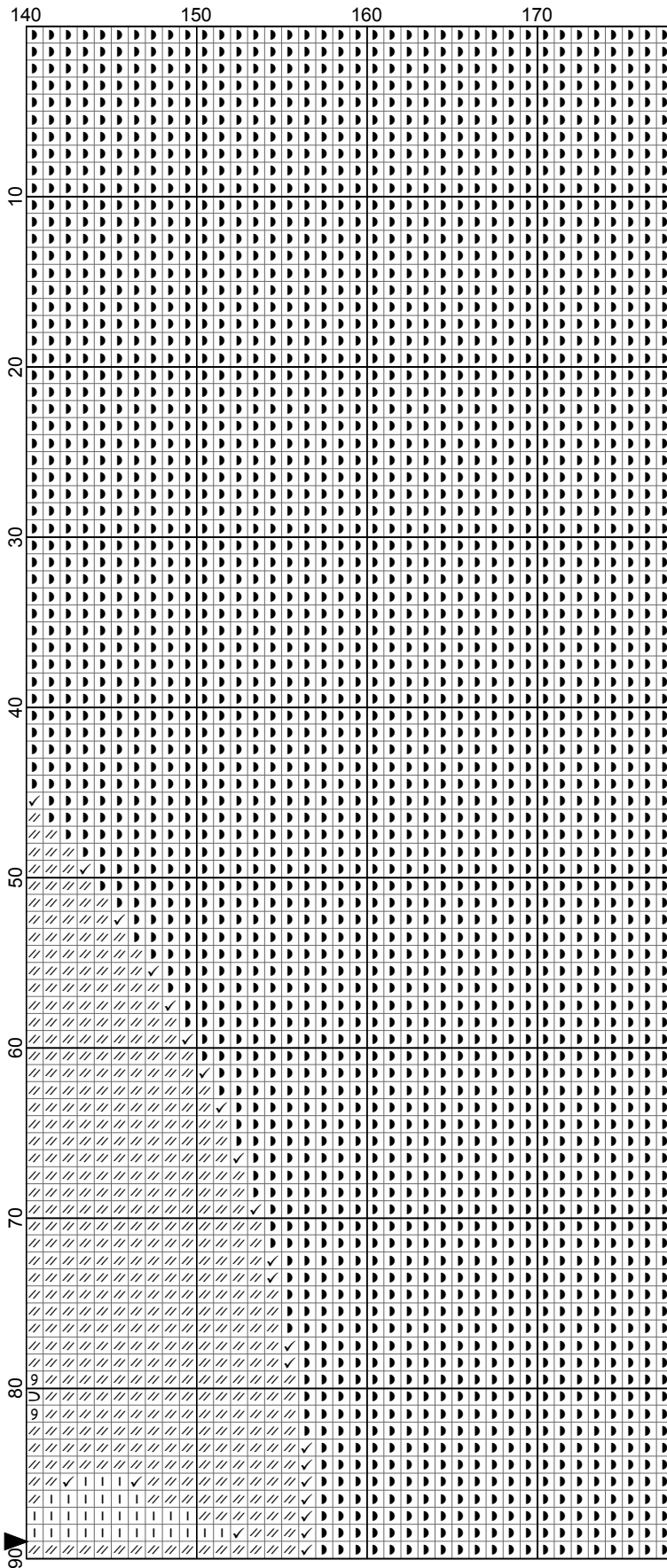


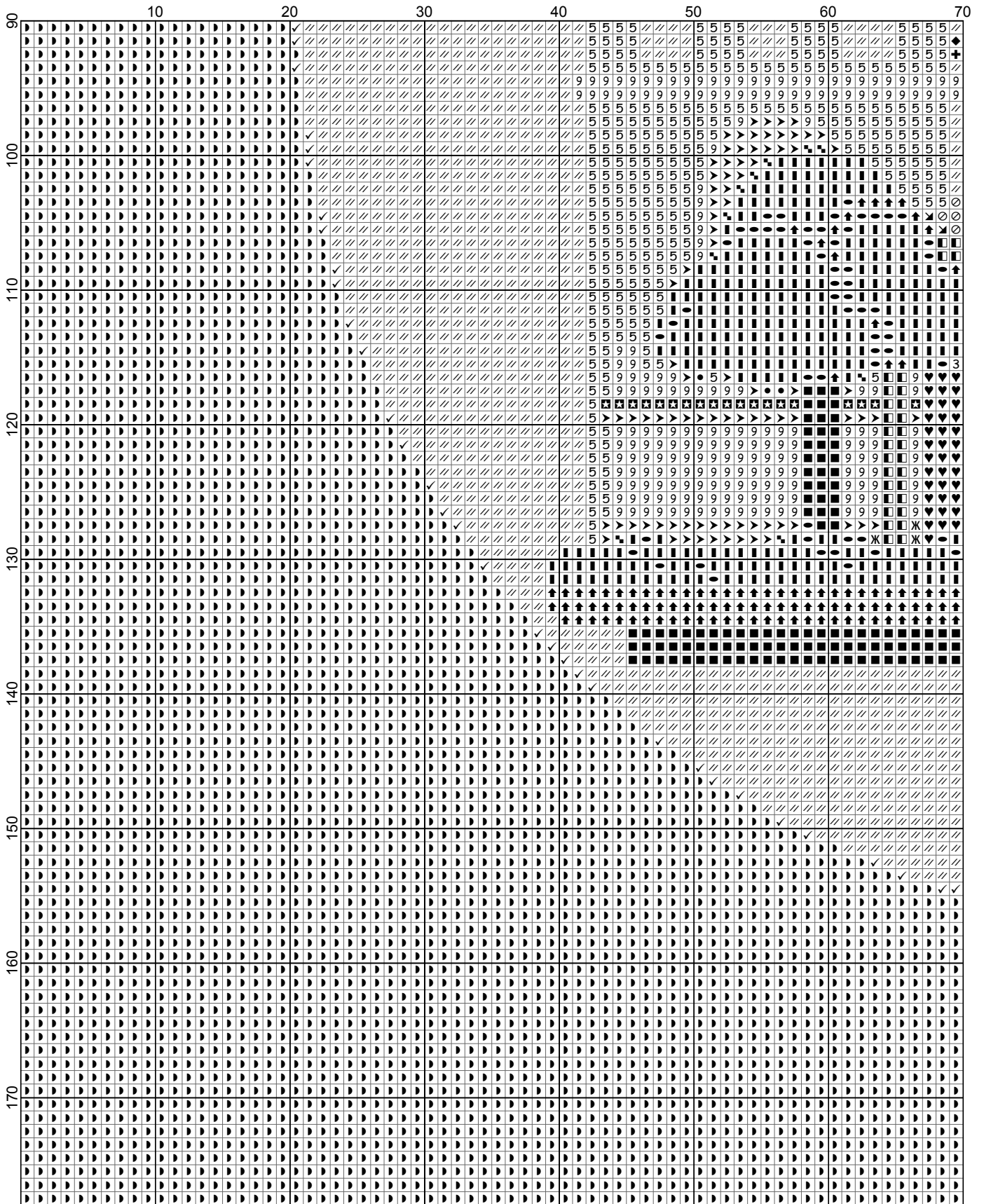


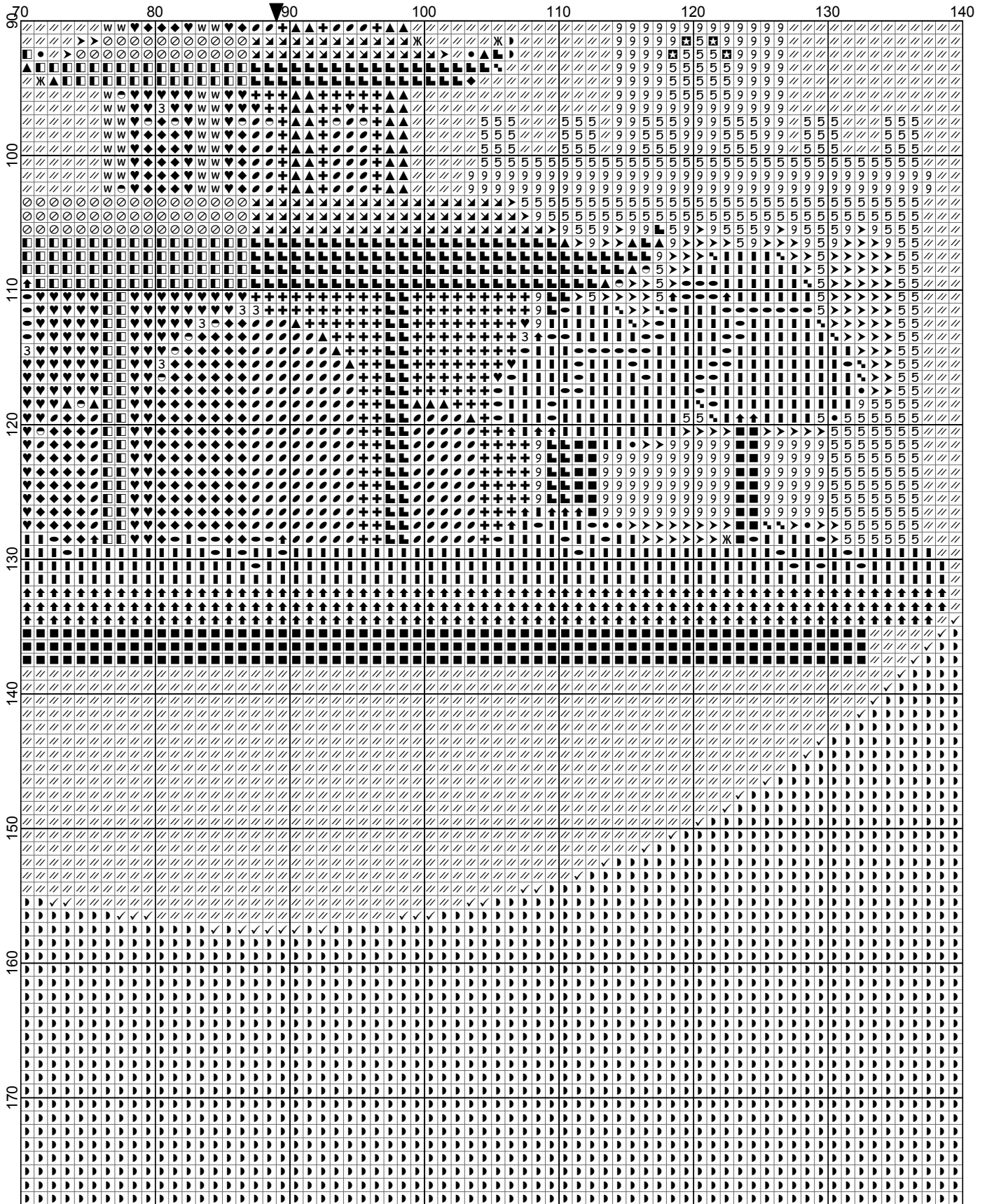


China

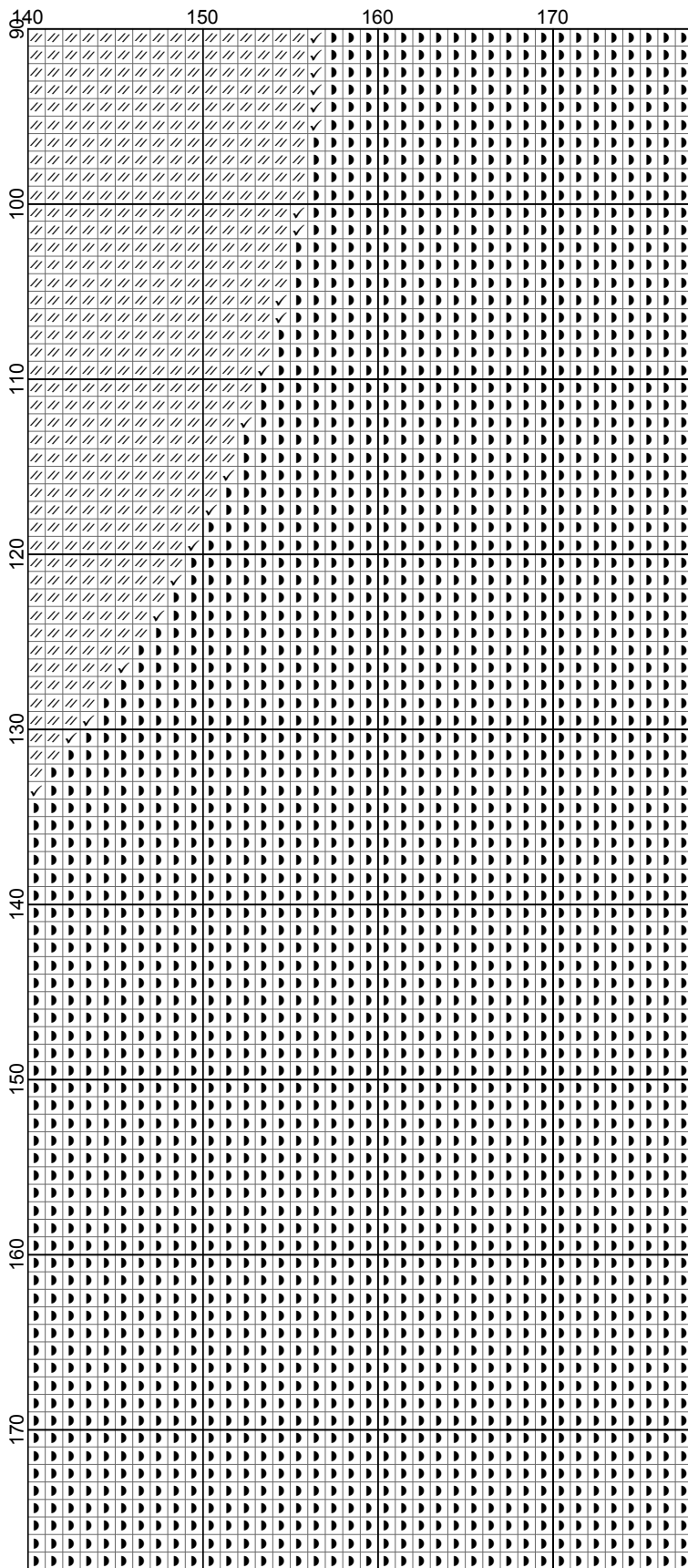


- Legend:
- DMC-154
  - DMC-169
  - DMC-414
  - DMC-738
  - DMC-902
  - DMC-906
  - DMC-3032
  - DMC-3041
  - DMC-3045
  - DMC-3053
  - DMC-3341
  - DMC-3347
  - DMC-3348
  - DMC-3363
  - DMC-3364
  - DMC-3740
  - DMC-3761
  - DMC-3766
  - DMC-3771
  - DMC-3774
  - DMC-3777
  - DMC-3781
  - DMC-3802
  - DMC-3817
  - DMC-3826
  - DMC-3853
  - DMC-3855
  - DMC-3858
  - DMC-3860
  - DMC-Ecru



































China



**Author:** DiamondPaintingPatterns.net  
**Grid Size:** 178W x 178H  
**Design Area:** 17,80" x 17,80" (178 x 178 stitches)

**Legend:**

	DMC 154	grape - vy lt	(367 stitches)		DMC 3740	antique violet - dk	(224 stitches)
	DMC 169	pewter - lt	(278 stitches)		DMC 3761	sky blue - lt	(253 stitches)
	DMC 414	steel gray - dk	(348 stitches)		DMC 3766	peacock blue - lt	(16994 stitches)
	DMC 738	tan - vy lt	(520 stitches)		DMC 3771	terra cotta - ul vy lt	(36 stitches)
	DMC 902	garnet - vy dk	(329 stitches)		DMC 3774	desert sand - vy lt	(28 stitches)
	DMC 906	parrot green - md	(738 stitches)		DMC 3777	terra cotta - vy dk	(352 stitches)
	DMC 3032	mocha brown - md	(32 stitches)		DMC 3781	mocha brown - dk	(329 stitches)
	DMC 3041	antique violet - md	(191 stitches)		DMC 3802	antique mauve - vy dk	(349 stitches)
	DMC 3045	yellow beige - dk	(235 stitches)		DMC 3817	celadon green - lt	(7735 stitches)
	DMC 3053	green gray	(40 stitches)		DMC 3826	golden brown	(297 stitches)
	DMC 3341	apricot	(11 stitches)		DMC 3853	autumn gold - dk	(266 stitches)
	DMC 3347	yellow green - md	(136 stitches)		DMC 3855	autumn gold - lt	(629 stitches)
	DMC 3348	yellow green - lt	(15 stitches)		DMC 3858	rosewood - md	(13 stitches)
	DMC 3363	pine green - md	(330 stitches)		DMC 3860	cocoa	(49 stitches)
	DMC 3364	pine green	(34 stitches)		DMC Ecru	ecru	(525 stitches)

**Pattern shape:** 2.5 mm (1/10 inch) square

**Free for download and print.**

This pattern is for personal and noncommercial use only.  
 Don't redistribute or sell this pattern on other market or pattern platforms.

Visit <https://DiamondPaintingPatterns.net> for more free printable diamond painting patterns.

**How to print this PDF at 100 percent (actual size)**

When you need to print a document precisely at its actual size, but the output that emerges from your home printer appears too large or too small, check your PDF application for settings that force its output at more or less than actual size.

This is what you need to do for printing without resizing:

- Open your PDF document
- Select 'Print...' in the File menu
- Within the 'Print' settings window, set the scale to 100%
- and press 'Print' to print at 100% of the original PDF.